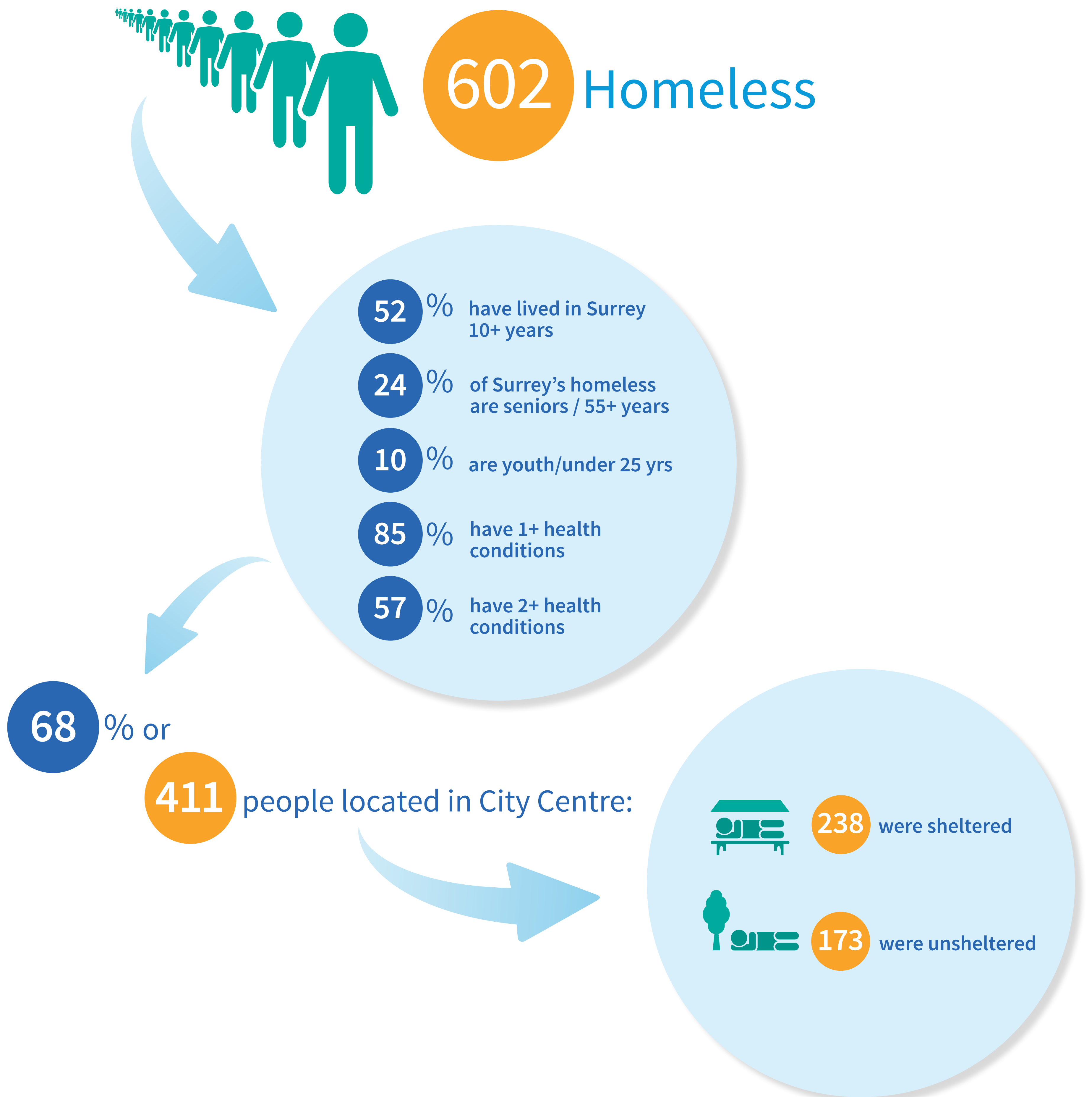


Community Need

The **2017** Homeless Count identified



Current Options

Currently people who are homeless in the City Centre area have access to:

Outreach Workers



Shelters



160 beds

- PERMANENT - Gateway Shelter - 40 beds - opened 2005 **Full**
- Boulevard Shelter - 40 beds - opened December 2015 **Full**
- Parkway Shelter - 40 beds - opened December 2016 **Full**
- Guildford Shelter - 40 beds - opened February 2017 **Full**

18 units of permanent **Full**
Supportive Housing

Rent supplements for the
Private Rental Market



Independent Social Housing
Rent Assistance in the Private Market
Private Rental

