

Online Information Session

Permanent Shelter Project 3020 Gilmore Diversion, Burnaby

May 15, 2025
5:30 pm – 7:00 pm



Photo: Google StreetView

Territory acknowledgment

We acknowledge, with gratitude, that the area we are discussing today is situated on the ancestral and unceded territories of the hə́ŋqəmiŋəm and Sḵw̱x̱wú7mesh Sníchim speaking peoples.



Housekeeping

Recording of Session

This presentation is being recorded until the start of the Q&A

Follow up

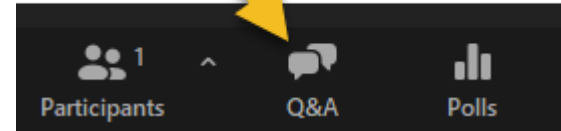
We welcome further questions and comments by email to:
communityrelations@bchousing.org

Note-keeping

We will be taking notes of all feedback and preparing an engagement summary report at the end of the engagement period. We will share the report with the City of Burnaby and the community.

Q&A Function

To ask a question during the Q&A, please use the Q&A function on zoom.



Introductions

Deanna Cummings

Facilitator,
EcoPlan International, Inc

Aliya Tejani

Senior Manager,
Regional Development,
BC Housing

Louise Sallai

Supportive Housing
Advisor,
BC Housing

Sandy Stenning

Coordinated Access &
Assessment Manager,
BC Housing

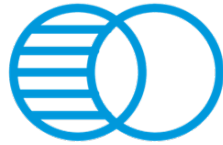
Jason Lee

Senior Communications
Advisor,
BC Housing

For our time together, **We commit to:**



Come together in the
spirit of community



Share information openly
and transparently



Balance time for sharing
information and answering
questions

For our time together, **We ask that all participants:**



Use respectful,
people-first language



Ask brief, genuine questions
and allow space for answers

Agenda

- Homelessness & Housing in Burnaby
- New Permanent Shelter at 3020 Gilmore Diversion
- Q&A

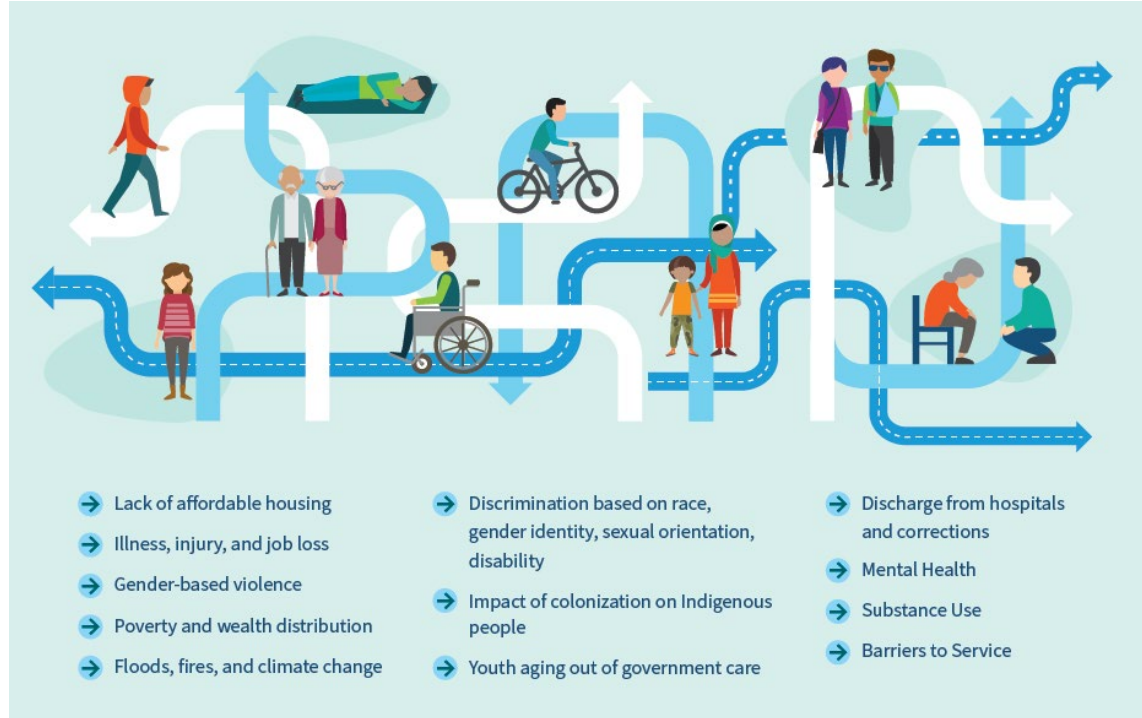
Homelessness in Burnaby

- **209 people** were identified as experiencing homelessness in Burnaby.
(Point-in-Time Homeless Count, April 2023)
- This is a **69% increase** in people experiencing homelessness since the last Point-in-Time count in 2020.
- City of Burnaby's *HOME: Housing and Homeless Strategy* and the Mayor's Task Force on Unsheltered Community Members also highlighted **the need for more shelter spaces** in Burnaby



Photo: Burnaby NOW

Pathways to Homelessness



Purpose of a Shelter - As a Gateway to Housing



Unsheltered

People without shelter are often only able to focus on basic survival needs.



**Homeless
Outreach and
Service
Provider
Referrals**



Shelters

When we bring people indoors and connect them with services and supports, it helps stabilize their lives and supports them to a pathway of permanent housing.



**Coordinated
Access &
Assessment
Process**



**Transitional/permanent
housing with supports**



Subsidized housing



**Market rentals with
supported rent supplements**

The Housing Ecosystem



↑
3020 Gilmore Diversion

3020 Gilmore Diversion



Why this location?

- Permanent shelters are urgently needed in Burnaby for people who are experiencing homelessness in Burnaby.
- This site is available.
- This site is close to services, amenities and transit. These are essential for people who are transitioning out of homelessness and working towards a healthy, stable life.

New Permanent Shelter



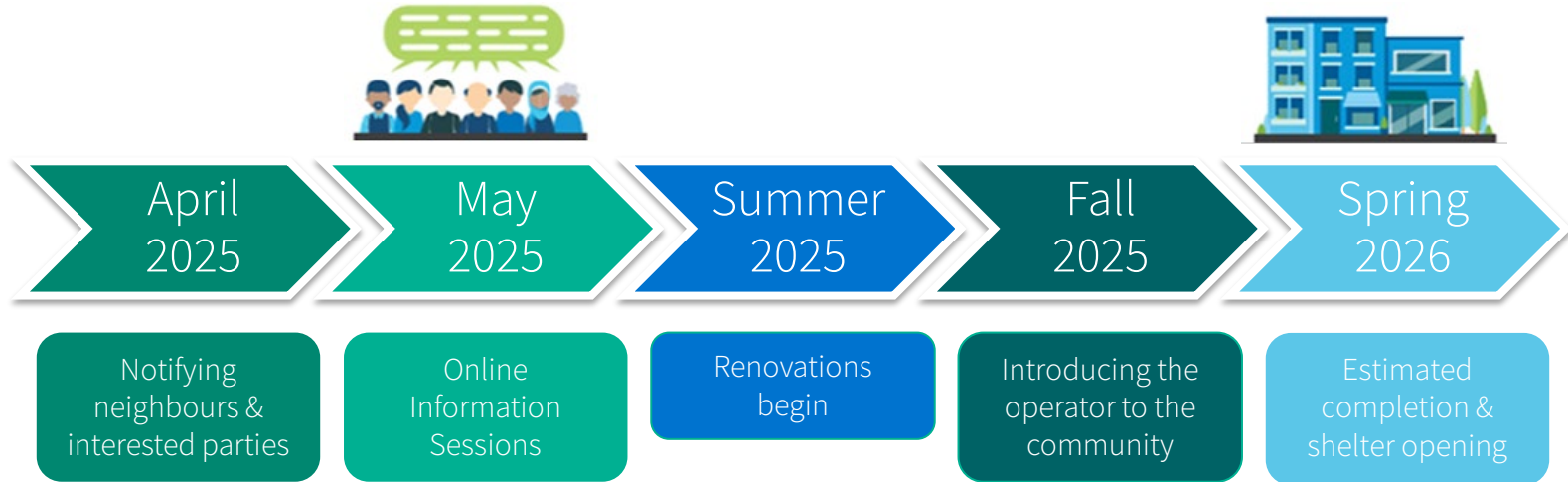
Shelter Features

- Up to 80 semi-private sleeping pods across two floors
- Washrooms, kitchen and laundry facilities
- Staff offices, indoor amenity space, programming space
- Fenced grounds, access control, security cameras and lighting

Is rezoning required?

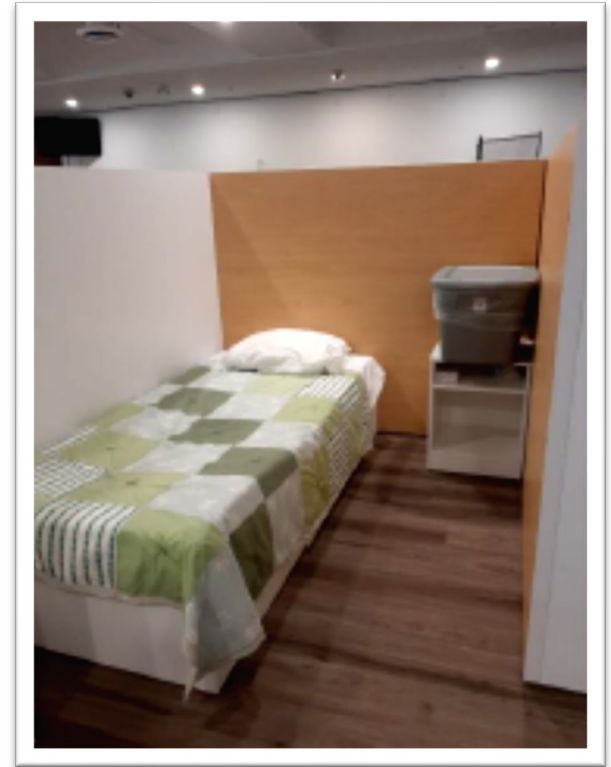
- The City of Burnaby **does not require rezoning** for shelter use if the land is owned or leased by government agencies including BC Housing.
- BC Housing and the City have been **working together** on securing a location for a permanent shelter to replace the temporary shelter at Douglas Road.
- The City proactively took action to update their bylaw to create more flexibility for BC Housing to **provide necessary shelter for the community**.

Project Timeline



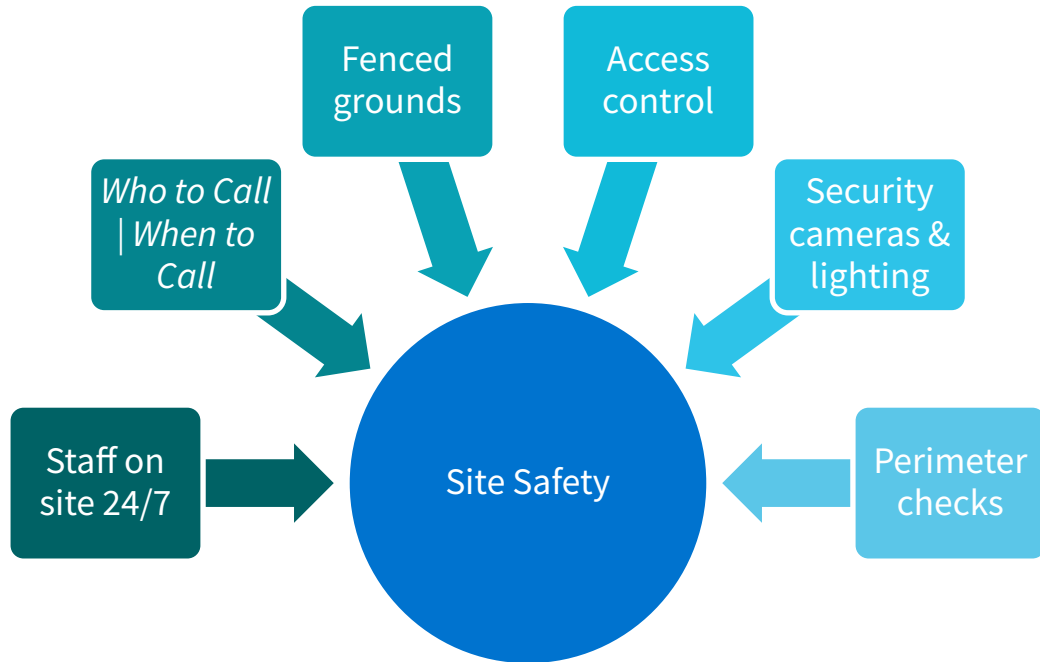
Shelter Operations & Services

- Staff on site 24/7 to manage the building and provide services to shelter guests
- Meals, storage, laundry, washroom and shower facilities
- Connection to permanent housing and community-based services
- BC Housing will select a non-profit operator through a fair and open process



*Semi-private sleeping pod
(Lighthouse Shelter in Abbotsford)*

Site Safety



Community Integration & Safety

BC Housing and the shelter operator will be committed to:

- Answering questions and addressing concerns **quickly and collaboratively**
 - **Direct phone number** will be shared with neighbours
 - We welcome **ongoing dialogue** about any issues with the shelter
- **Working with partners** who are best positioned to address safety issues beyond the shelter, such as **the RCMP or bylaw officers** who support the neighbourhood and street safety

Please use the Q&A function to ask questions.

Thank you for participating.

For more information about the project, please visit
letstalkhousingbc.ca/burnaby-gilmore-diversion

We welcome questions or comments by email to
communityrelations@bchousing.org