

# Chilliwack: Supporting Community Housing Needs

*Community Information Session*

*April 13, 2021*



## **Operating Values: How we will work together**

- We will work to balance airtime.
- We are committed to answering questions and sharing information.
- We will come together in the spirit of community.

## **Operating Values: How we will work together**

- We will commit to respectful dialogue using people-focussed language.
- We will create a safe space for everyone to participate.
- We will listen to understand perspectives that are different from our own.

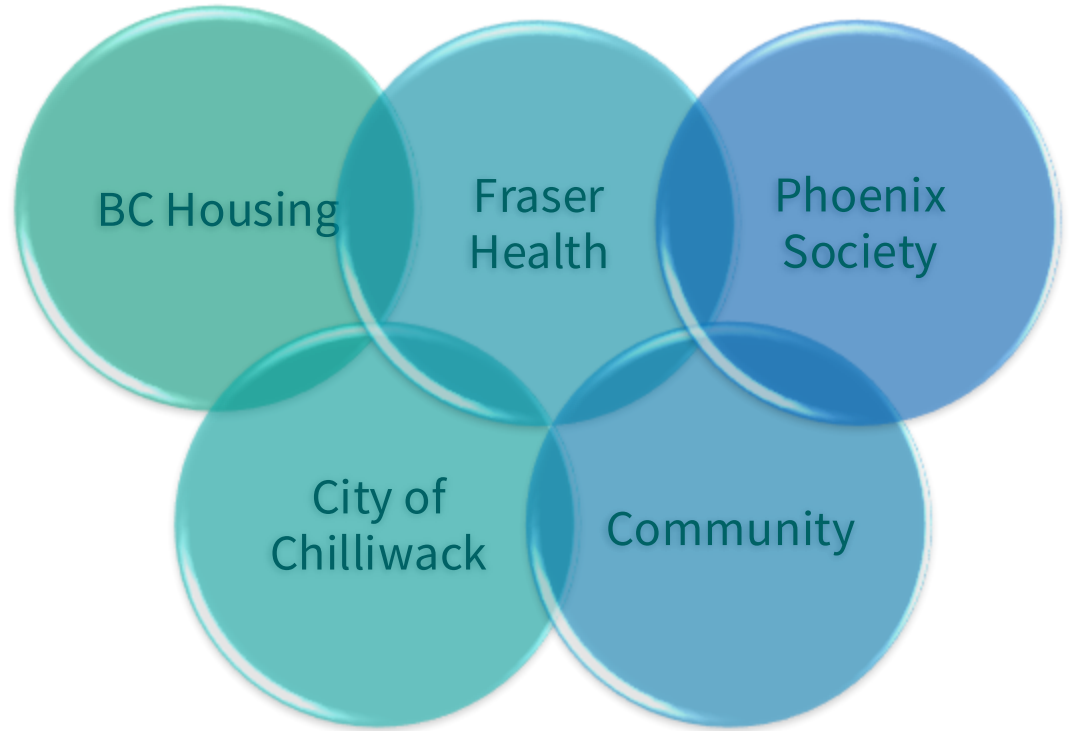
# Today's Agenda

1. Welcome & introductions
2. Understanding Homelessness in Chilliwack
3. The Proposal
4. Managing the Site
5. Next Steps
6. Question and Answer Period

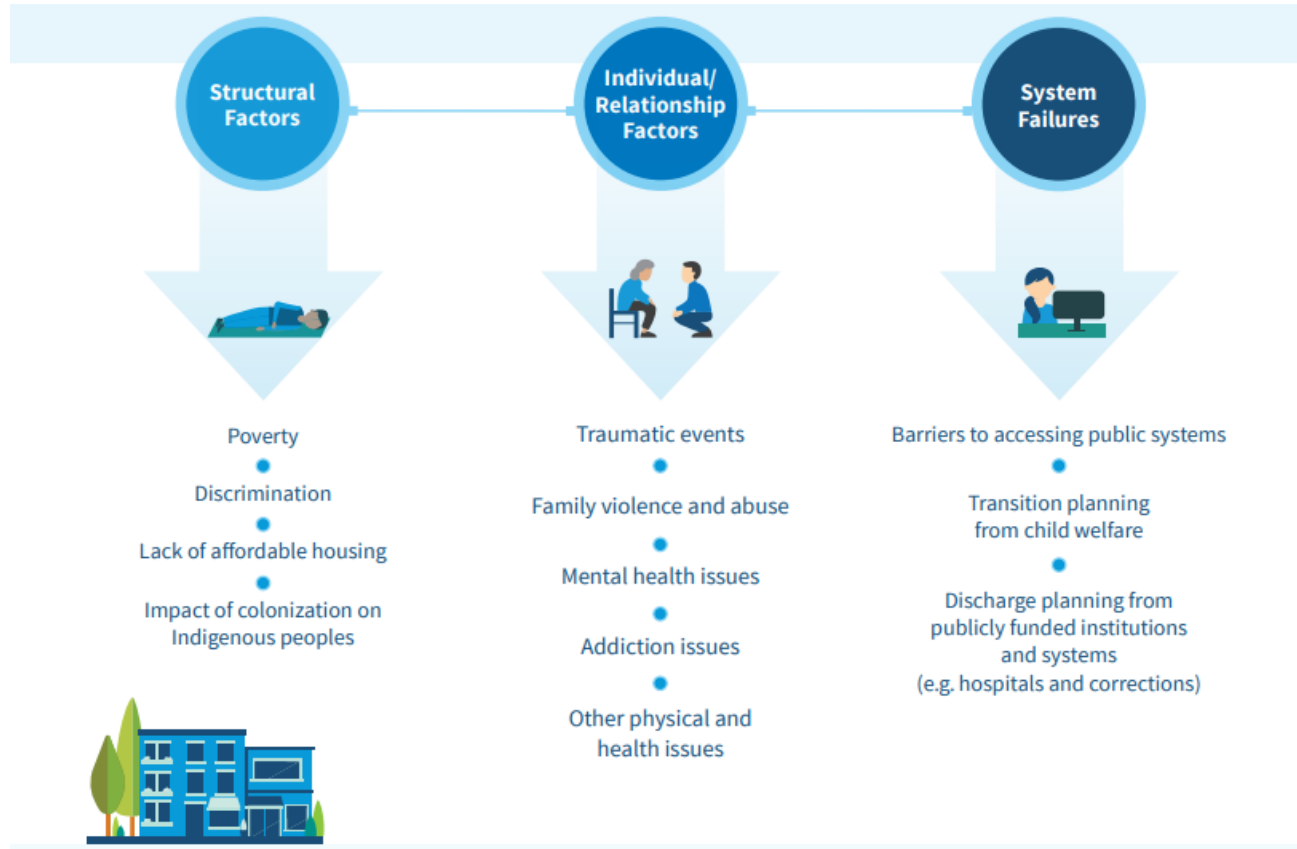
## Presenters & Panelists

- Frank Tick, Coordinated Access and Assessment Manager, BC Housing
- Karen Stanton, Manager of Long-Range Planning, City of Chilliwack
- Keir Macdonald, CEO, Phoenix Society
- Mike Kenyon, Clinical Director Mental Health and Substance Use Services, Fraser Health
- Stanley Yuen, Development Manager, BC Housing

It takes a  
community to  
address  
homelessness



# Pathways to Homelessness



# Addressing Homelessness in Chilliwack

- Chilliwack recorded 306 people experiencing homelessness during the last Point-in-Time survey in 2020. This number has grown by 85 since the last count in 2017.
- Shelters and outreach is an important and immediate support for people experiencing homelessness, but the goal is for everyone to have a home.
- Social service providers report more people at risk and increased wait lists



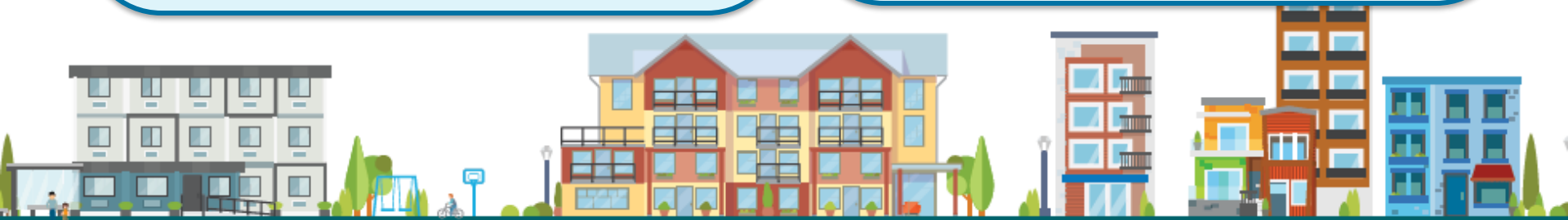
# Rowat Avenue Proposal

## **Supporting Housing**

50 units of self-contained studio homes with the necessary supports

## **Shelter Facility**

40-bed shelter that would give people experiencing homelessness in Chilliwack a safe, warm place to stay



## Rowat Ave Proposal Continued

- BC Housing would fund construction and provide the operating budget
- 4-storey building
- Safe, stable housing for Chilliwack residents experiencing homelessness
- Operator of the building is the Phoenix Society



## How this Site was Chosen

- Availability
- Proximity to services/transit
- Appropriate condition and size



# Phoenix Society

The Phoenix Society offers encouragement and accessible services for people who face barriers related to mental health, substance use, criminal justice involvement and employment



## Shelter and supportive housing

Shelter	Supportive Housing
 First come first served	 Assessment process for applicants
Access to a bed temporarily (1 night at a time) 	A self-contained studio home 
 Some meals may be provided	1 hot meal provided, plus private kitchenette 
Shared sleeping space 	Private unit 
 No payment	 Pay rent for unit
Outreach worker available to connect to support services offsite 	24/7 access to staff and support services onsite 

Supportive housing is a studio home....



## With on-site supports....

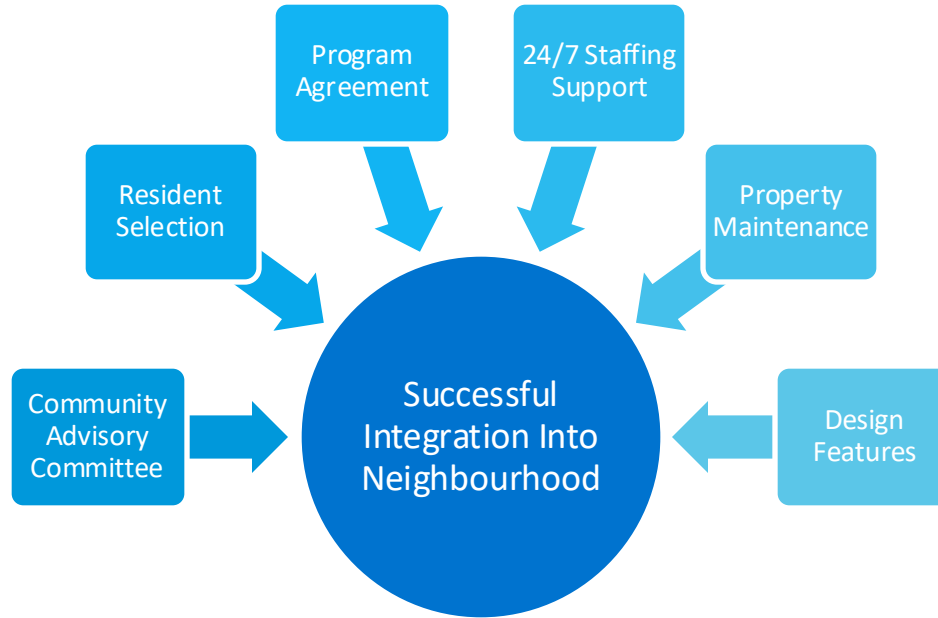
- Daily meal services
- Individual case planning
- Individual & group services  
(*life skills, community kitchen*)
- Connection to community supports  
(*education & employment opportunities, health & wellness services*)



## Resident Selection Process – Thoughtful & Thorough

- Over the age of 19
- Experiencing or at risk of homelessness
- In need of additional support to maintain housing
- Priority given to Chilliwack residents
- BC Housing and the Phoenix Society would work with local service providers using the Coordinated Access Model
- People will be assessed using a thorough process to determine services needed and create healthy resident mix
- All residents pay rent and sign a program agreement around expectations and behaviours

# How the Site will be Managed



## Fraser Health

- Fraser Health provides a number of services that residents will be eligible to receive and will support those requiring severe substance use challenges and mental health challenges.
- These supports can come through teams such as ICM, Riverstone, the Mental Health Centre, Integrated Response Team (Emergency Response Centre), and Harm Reduction through Population Public Health.
- Those requiring supports will receive team-based outreach support and be connected to specific teams as appropriate.

# Process & Next Steps



## More questions or comments?

- Visit **Let's Talk Housing BC** website:  
<https://letstalkhousingbc.ca/chilliwack-rowat>
- Submit inquiries through [communityrelations@bchousing.org](mailto:communityrelations@bchousing.org)
- City of Chilliwack: [planning@chilliwack.com](mailto:planning@chilliwack.com)
- For more information on how to apply for supportive housing, visit <https://www.bchousing.org/housing-assistance/housing-with-support/supportive-housing>



# Questions?

## Evaluation

If you could take three minutes to complete our online survey about how tonight's session went we would be appreciative.





**Thank You**



# **Territorial Acknowledgement**