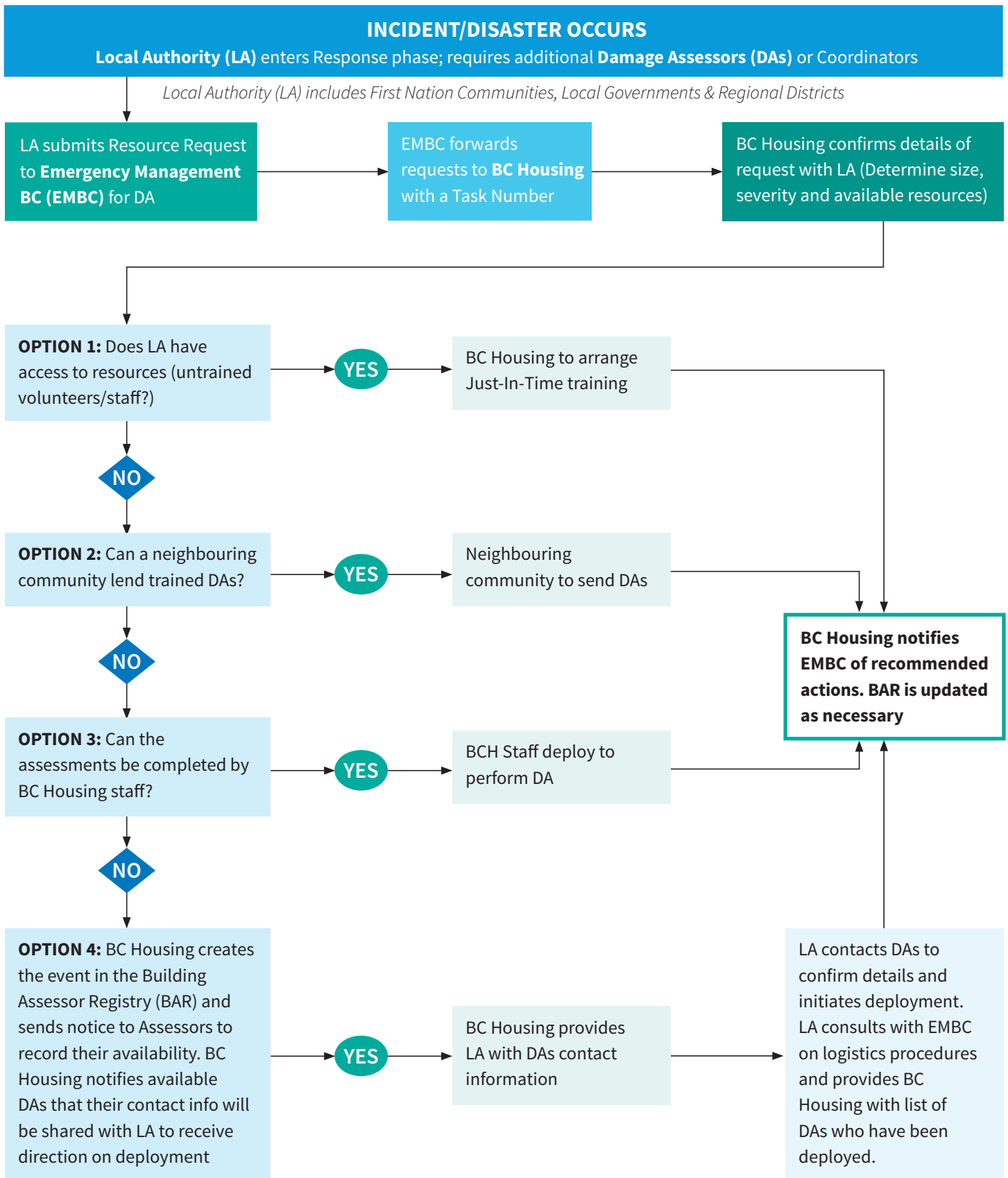


Decision Making Process – Request for Damage Assessors



This flow chart represents the process to support a Local Authority's request for damage assessors. The decision matrix is intended to assist the Damage Assessment Branch of an active Local Authority Emergency Operation Centre (EOC), Provincial Regional Emergency Operations Centre (PREOC), Provincial Emergency Coordination Centre (PECC) or directly by BC Housing where these roles are not activated.

The following assumptions are made:

- ▶ An Incident Command System such as the British Columbia Emergency Management System (BCEMS) is being utilized;
- ▶ A Local Authority is responding to a recent, ongoing, or emerging disaster;
- ▶ The Local Authority has activated an EOC to support the local response;
- ▶ The Local Authority has situational awareness that some building damage has occurred that requires further rapid and/or detailed assessment;
- ▶ The Local Authority has submitted a resource request form for damage assessment support to Emergency Management BC (EMBC) through the PREOC or Regional Office using standard forms and processes;
- ▶ The request for assessors is intended for buildings only; not bridges, towers, dams, roads, or other types of specialized construction;
- ▶ Additional response activities are concurrently taking place.

This flow chart is a reference guide and should be considered as one component of post-disaster building assessment.

To assist local authorities, BC Housing has developed and collected numerous resources and references including:

- ▶ Operational Guides
- ▶ Checklists
- ▶ Position Descriptions
- ▶ Templates and Samples
- ▶ Related Links

This information is available on BC Housing's PDBA website along with information on training and program updates.

<https://www.bchousing.org/about/post-disaster-building-assessments>