

# Hope

# Supportive Housing and Shelter

# 1275 7th Ave

*Community Information Session*

*February 2022*



# Guiding Principles

- This will be a safe spaces for sharing ideas
- Participation will be balanced and inclusive to ensure a diversity of voices ‘around the table’
- The discussion and question asking will be designed to achieve true dialogue (not a series of monologues, not debating)
- That there may be individuals attending today with active or historic experience of living with addiction, mental health challenges, precarious housing, homelessness and/or other trauma. Stigmatizing or discriminatory language may cause actual harm and/or prevent participation. If an individual does this, they will be asked to leave the session.

## Facilitator

- Roberta Randall, Manager, Community and Tenant Affairs, BC Housing

## Panelists

- Tsitsi Watt, Regional Director, Fraser Region Operations, BC Housing
- Frank Tick, Coordinated Access and Assessment Manager, BC Housing
- Aliya Tejani, Development Manager, BC Housing
- Larry Harder, Executive Director, Planning and Projects, Fraser Health
- Tabitha Mclaughlin, Manager, IHART Team, Fraser Health
- Brian Dodd, Program Coordinator, Hope & Area Transition Society (HATS)
- Gerry Dyble, Executive Director, Hope & Area Transition Society (HATS)
- Martin Pykalo, Architect, Martin Pykalo Architect Inc.
- Alison Brown, Senior Project Manager, Martin Pykalo Architect Inc.
- Simon James, Artist, Martin Pykalo Architect Inc.

## Purpose of this Session

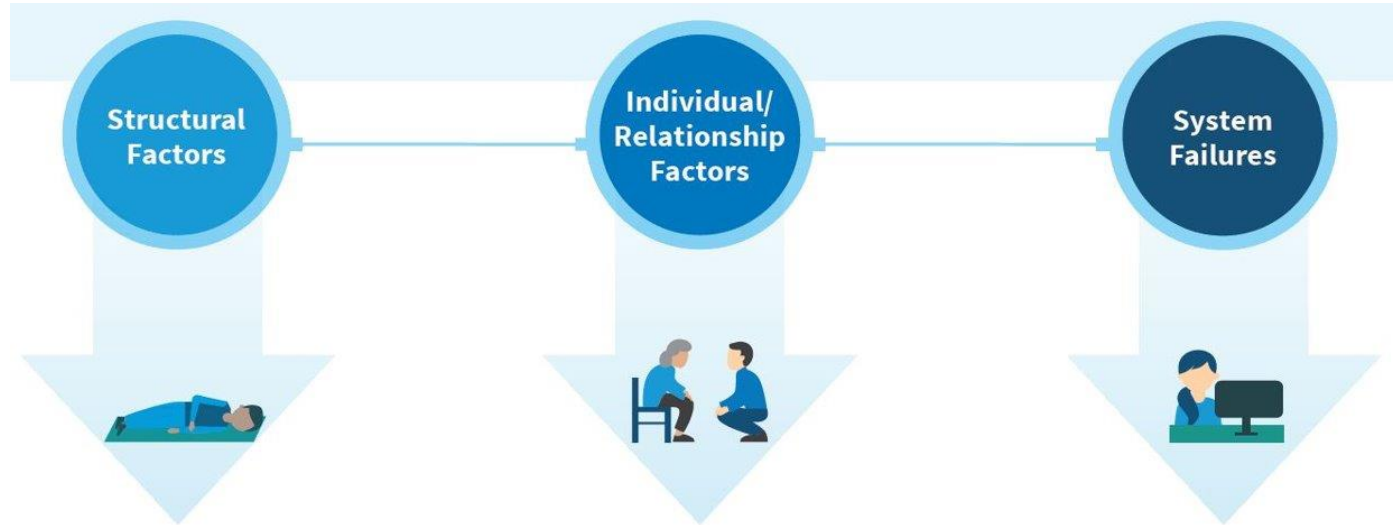
- Present information about the proposed housing, answer questions and seek feedback on:
  - Landscaping and design
  - Integration of the building into the community
- This site will need to go through a rezoning and an Official Community Plan (OCP) amendment
- This session is early engagement and plans are still in the early stage

# Housing Continuum



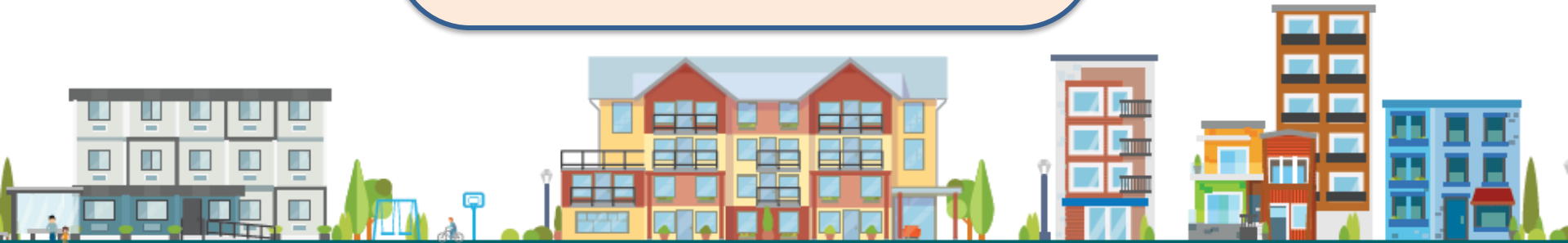
# Homelessness is on the rise across the region

## UNDERSTANDING PATHWAYS TO HOMELESSNESS



# Responding to the Housing Needs in Hope

69 people were identified as homeless  
in the 2020 Point-in-Time count, up  
from 42 in 2017



## Current Situation

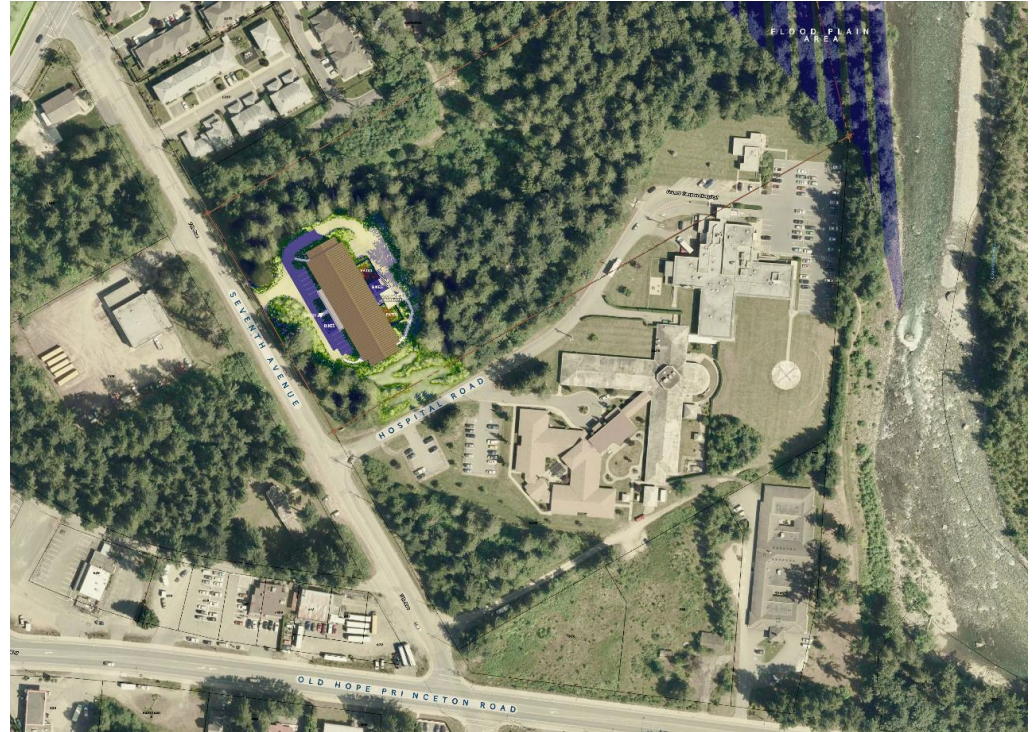
- Hope has one 11-bed shelter (pre-COVID 20-beds) operated by the Hope & Area Transition Society (HATS) at 650 Old Hope Princeton Highway
- In 2019, BC Housing purchased the land at 660/670 Old Hope Princeton Way to create the shelter and supportive housing; however, it did not get approved at the public hearing
- Since 2019, BC Housing has been engaging with the District of Hope, Fraser Health, First Nations and HATS to develop a new option for shelter and supportive housing in Hope



# Proposed Housing

## Proposed Site: 1275 7th Avenue

- Site is owned by Fraser Health
- Working with Fraser Health to secure a 20 year lease
- Modular building
- Wrap around services - shelter, supportive housing and Extreme Weather Response



# New Supportive Housing and Shelter

## 1275 7<sup>TH</sup> AVE

- Approximately 52 homes with supports
- 15 shelter beds
- 15 Extreme Weather Response beds
- Operated by HATS

## WHO WILL LIVE THERE

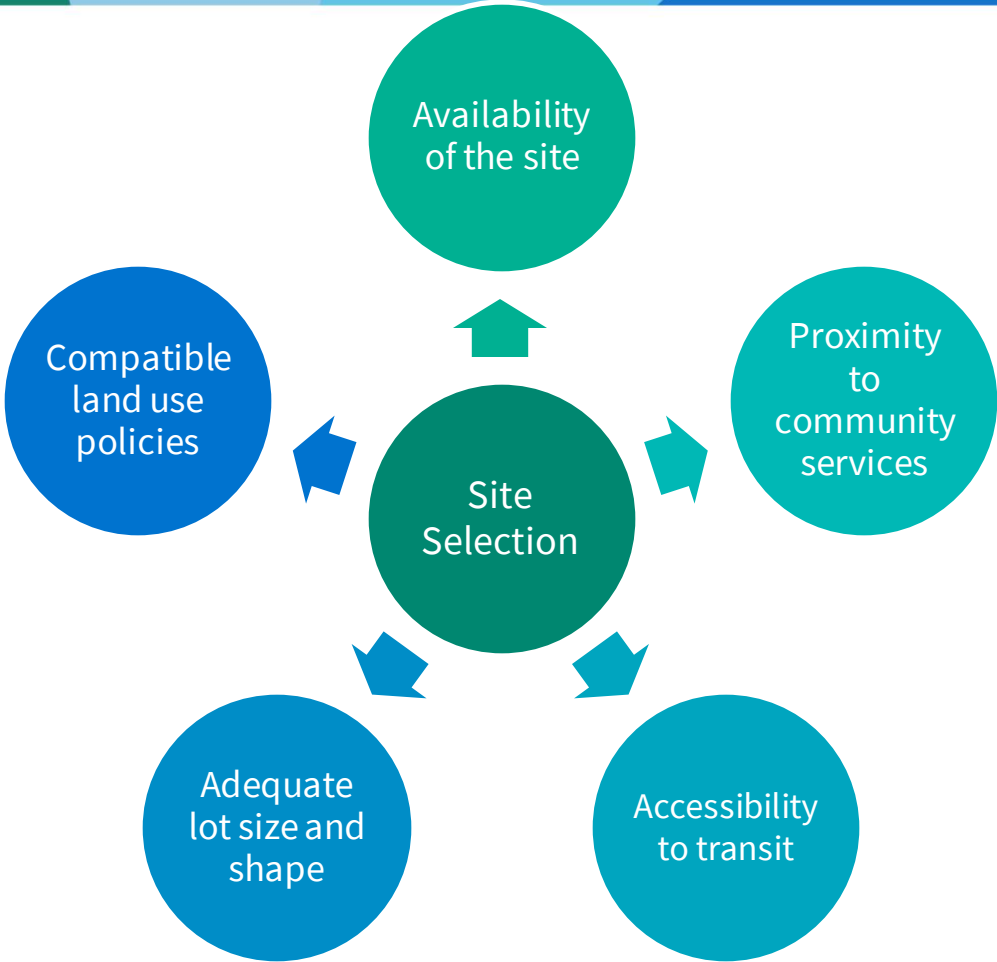
- Priority will be given to residents of Hope
- A local resident over the age of 19
- Experiencing or at risk of homelessness
- In need of additional support to maintain housing



## Fraser Health Land

- Fraser Health and BC Housing have been working with the District, and have identified the site next to Fraser Canyon Hospital
- Location is beneficial:
  - Fraser Health owned land
  - Hospital adjacent to provide a continuum of care to residents who need these supports
  - Proximity to community resources
  - Accessibility to transit
  - Compatible for land use – size and area

# Site Selection Criteria



# What is Modular Housing?

Modular housing uses standardized designs that can be easily transported on trucks and quickly assembled onsite.



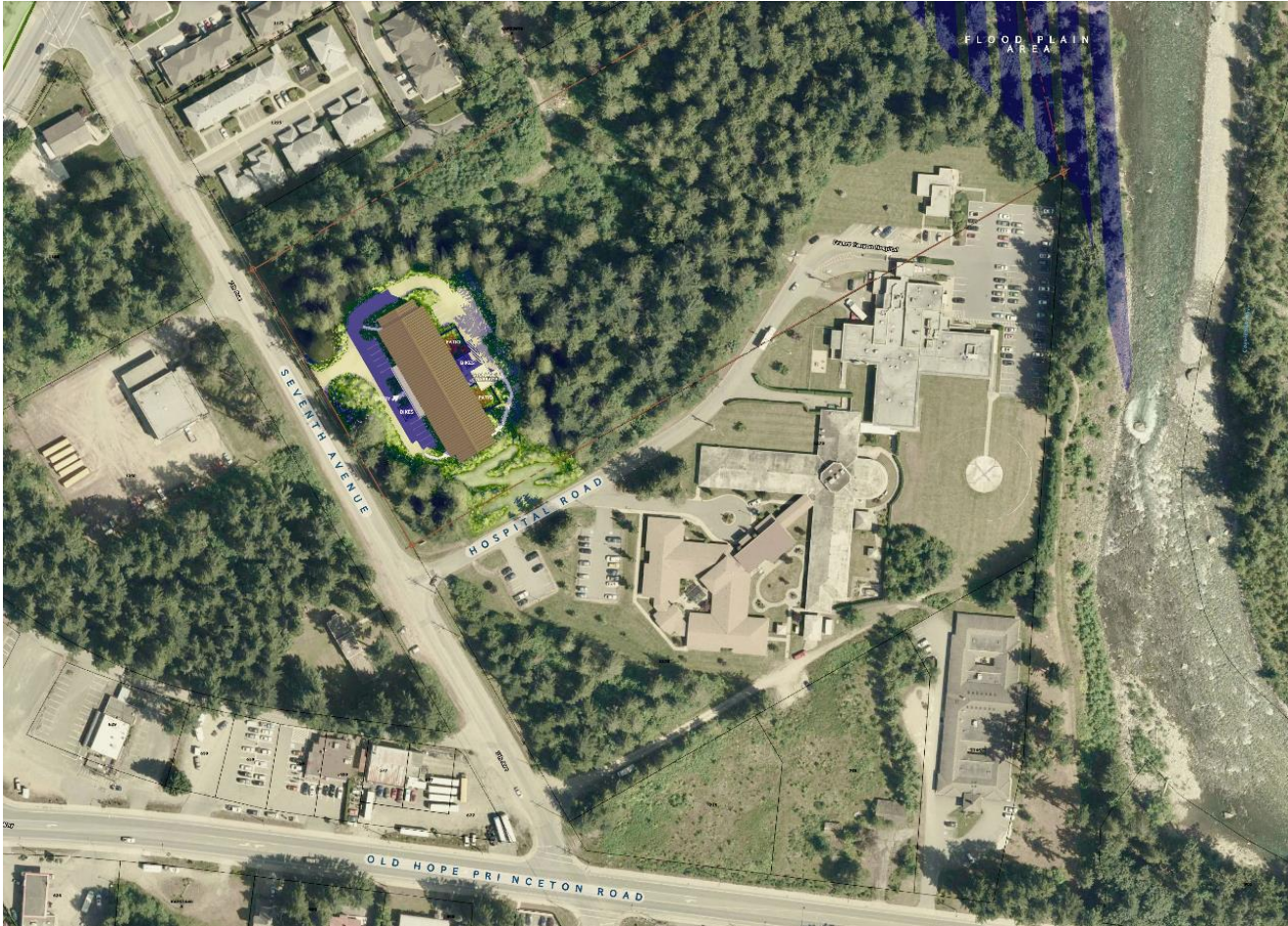
# Inside a Studio Home with Supports



## First Nations Engagement and Design

- First Nations collaboration is a foundation of this housing project
- We acknowledge we are guests on this land. This building will provide people from different cultures, diverse backgrounds, and different walks of life, with safety and shelter
- We are currently discussing building design, artwork, programming and partnerships with regional First Nations communities
- Feedback from today's session and from the local First Nations communities will be assessed for how they can be integrated into the building

# Supportive Housing Site plan



Images are preliminary  
and subject to change



Images are preliminary and subject to change



Images are preliminary and subject to change



Images are preliminary and subject to change

## Design Elements



## Example of First Nations Artwork

*749 School House Road, Gibsons*



# Hope & Area Transition Society (HATS)

- HATS is a non-profit society in Hope that provides domestic violence, substance use, homelessness and youth and family services
- Operating for 28 years in Hope providing domestic violence, substance use, homelessness and youth and family services
- We currently operate:
  - House of Hope shelter at 650 Old Princeton Hwy.
  - 900 Colonial Motel Emergency Response Centre
  - Transition House
  - Administration and counselling office located at 400 Part Street



# Fraser Health

- Fraser Health's Integrated Homelessness Action Response Team (IHART) team will have dedicated space in the proposed new building and be able to offer onsite services to shelter guest and residents of supportive housing
- Integrated Homelessness Action Response Teams are multidisciplinary care teams that provide support for sheltered or unsheltered individuals or those living in select supportive housing. The team will provide trauma informed and recovery-oriented service and ensure people receive primary care and other community services

# Shelter/Housing Types in Existing and Proposed Building

## Extreme Weather Response

- Identified by the municipality and work with non-profit organizations to run
- Typically open between November and March
- Open for extreme weather events e.g., freezing rain, snow, cold temperatures
- Opening is determined by the District

## Shelter

- First come, first serve
- Access to a temporary bed
- Temporary accommodation and essential services to meet the immediate needs for shelter, food, and security

## Supportive Housing

- Longer-term housing options
- Typically, self-contained studio units
- Hot meals
- Supports are provided to meet the needs of individuals
- Residents pay rent and would sign an agreement

# What supports are typically available in supportive housing?



# Who will live in the Supportive Housing?

## People who apply must be:

- A local resident over the age of 19
- Experiencing or at risk of homelessness
- In need of additional support to maintain housing

## Resident Selection Process

- The operator works with BC Housing and local service providers to match needs of resident to support services provided
- People are assessed using a thorough process to determine services need and create healthy resident mix
- All residents pay rent and sign a program agreement around expectations and behaviours

# How will the supportive housing be managed?





# Engagement Strategy and Next Steps

February 2022

February 2022

February until Public Hearing

February 24 and Spring 2022

Late spring 2022/Early summer (TBC)



## Neighbourhood & Stakeholder Outreach

Engaging with stakeholders, neighbours and the community on housing plans

## First Nations Engagement

Concurrently engaging with First Nations communities

## Feedback Period

Collect feedback and answer questions on the Let's Talk page and through email

## Community Engagement

Engagement session for the community to learn about this proposed project and answer questions

## Public Hearing

Mayor and Council will decide whether or not to proceed with the housing

# Questions?

## Contact us:

Let's Talk Housing: [letstalkhousingbc.ca/hopebc](https://letstalkhousingbc.ca/hopebc)

Email us at: [communityrelations@bchousing.org](mailto:communityrelations@bchousing.org)