

Welcome

Proposed Permanent Supportive Housing at 3027 & 3037 2nd Avenue, Port Alberni, BC

In-Person Open House:
April 1, 2025 from 5:30-7:30pm

Join the conversation about:

- Proposed Supportive Housing at 2nd Avenue
- Housing & homelessness in Port Alberni
- What is Supportive Housing?

Visit stations around the room and chat with project specialists and representatives from BC Housing.

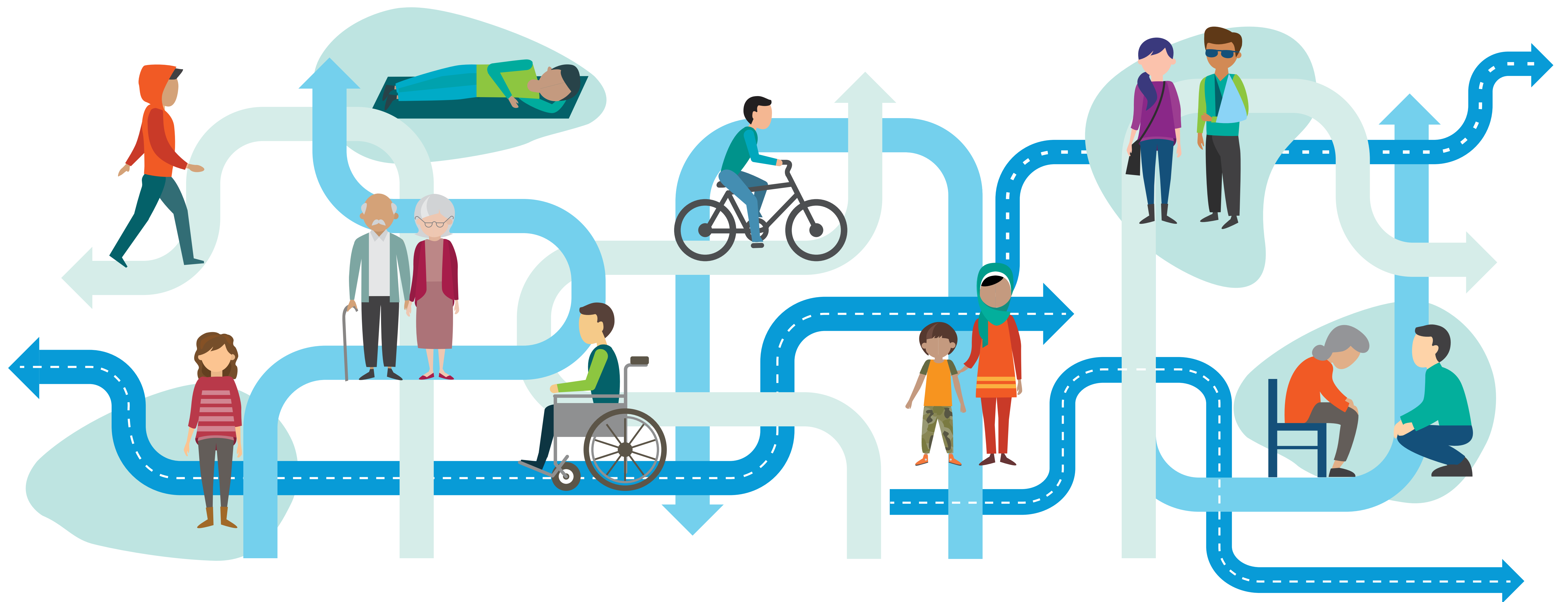
Help yourselves to snacks and refreshments.



BC HOUSING

We acknowledge, with gratitude, that the area we are discussing today is situated on the traditional territory of the Tseshaht and Hupačasath First Nations.

Pathways to Homelessness



- ➔ Lack of affordable housing
- ➔ Illness, injury, and job loss
- ➔ Gender-based violence
- ➔ Poverty and wealth distribution
- ➔ Floods, fires, and climate change
- ➔ Discrimination based on race, gender identity, sexual orientation, disability
- ➔ Discharge from hospitals and corrections
- ➔ Mental health
- ➔ Substance use
- ➔ Barriers to service
- ➔ Impact of colonization on Indigenous people
- ➔ Youth aging out of government care

3027, 3037 2nd Avenue

About the Proposed Development

- 55 studio homes (including accessible and adaptable units)
- 24/7 staffing and security measures
- Space to provide meals and support services for residents
- Outdoor space
- Design incorporates safe and welcoming spaces that can connect residents with one another and foster a sense of belonging and community

About the Location



- Proposed site on City-owned land at 3027 and 3037 2nd Avenue
- Project requires rezoning

Homelessness in Port Alberni

Currently in the community

163 people experiencing homelessness in Port Alberni according to the 2023 Point-in-Time homeless count.

View more data for Port Alberni:



Our Response – Housing First

When our most vulnerable neighbours can first access a warm bed, washrooms, and meals, they are in a much better position to improve their health and well-being.

Supportive housing in a community means there are fewer people sheltering outdoors. This increases community safety overall.

Step 1:

Offer people experiencing or at risk of homelessness safe, long-term housing appropriate for their needs.

Step 2:

Provide supports, services and guidance to maintain housing and achieve other personal goals.



BC HOUSING

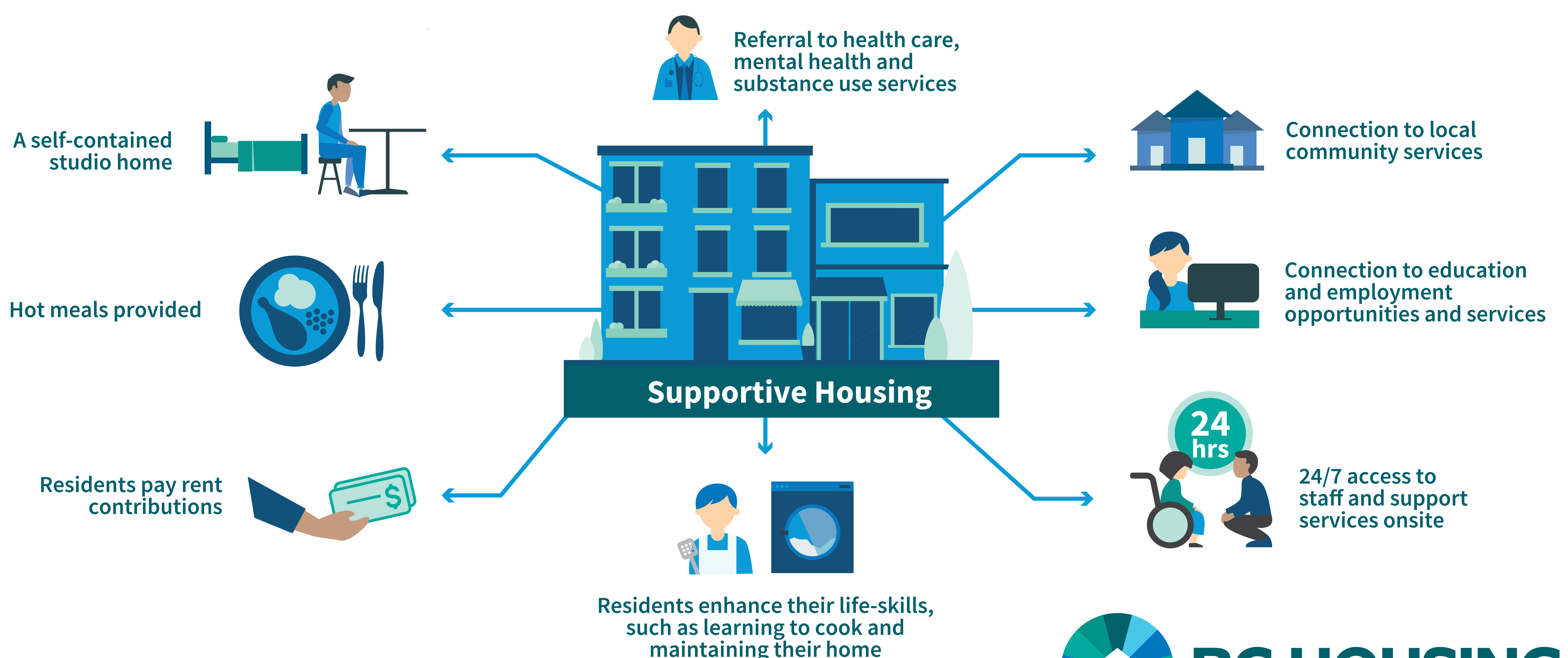
What is Supportive Housing?

Deeply affordable housing with on-site supports

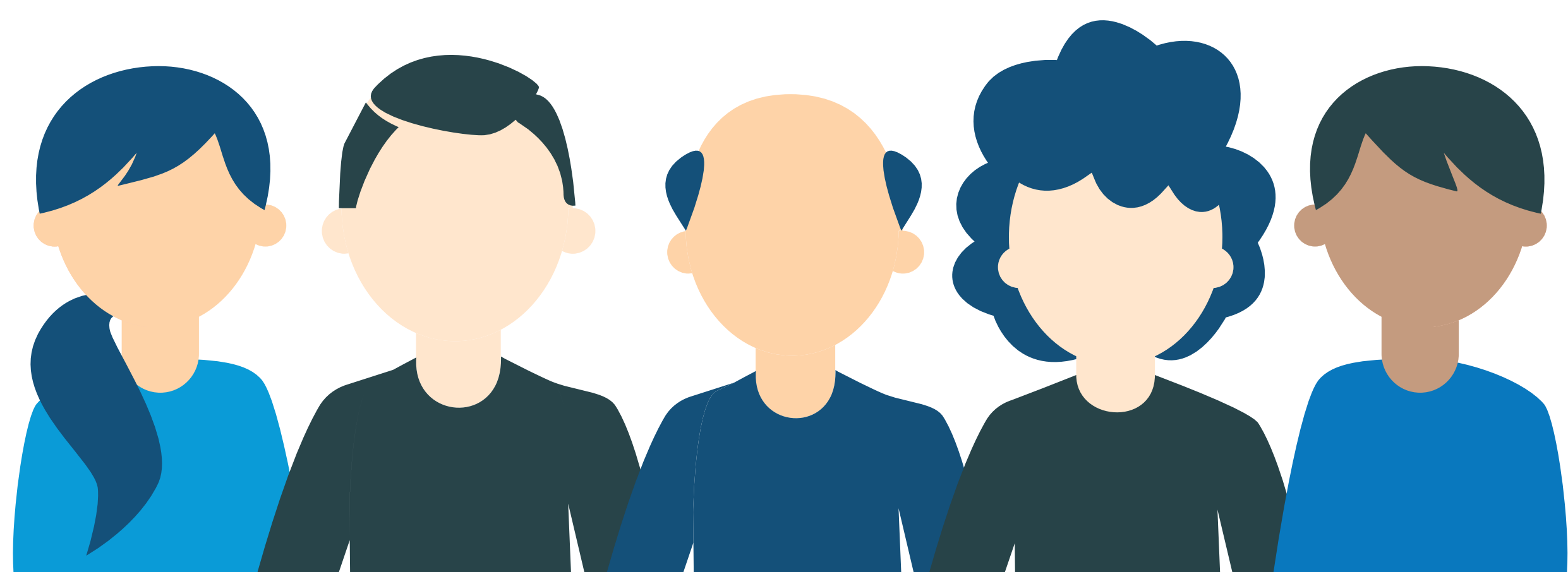


- Homes are for local people at risk of or experiencing homelessness
- Typically self-contained studio apartments
- Culturally informed support services and individual case planning

What supports are typically available?



Supportive Housing Residents



Who would live here?

- **Adults over the age of 19:**
- Including seniors and people with disabilities
- All genders welcome
- People experiencing or at risk of homelessness

Tenancing process

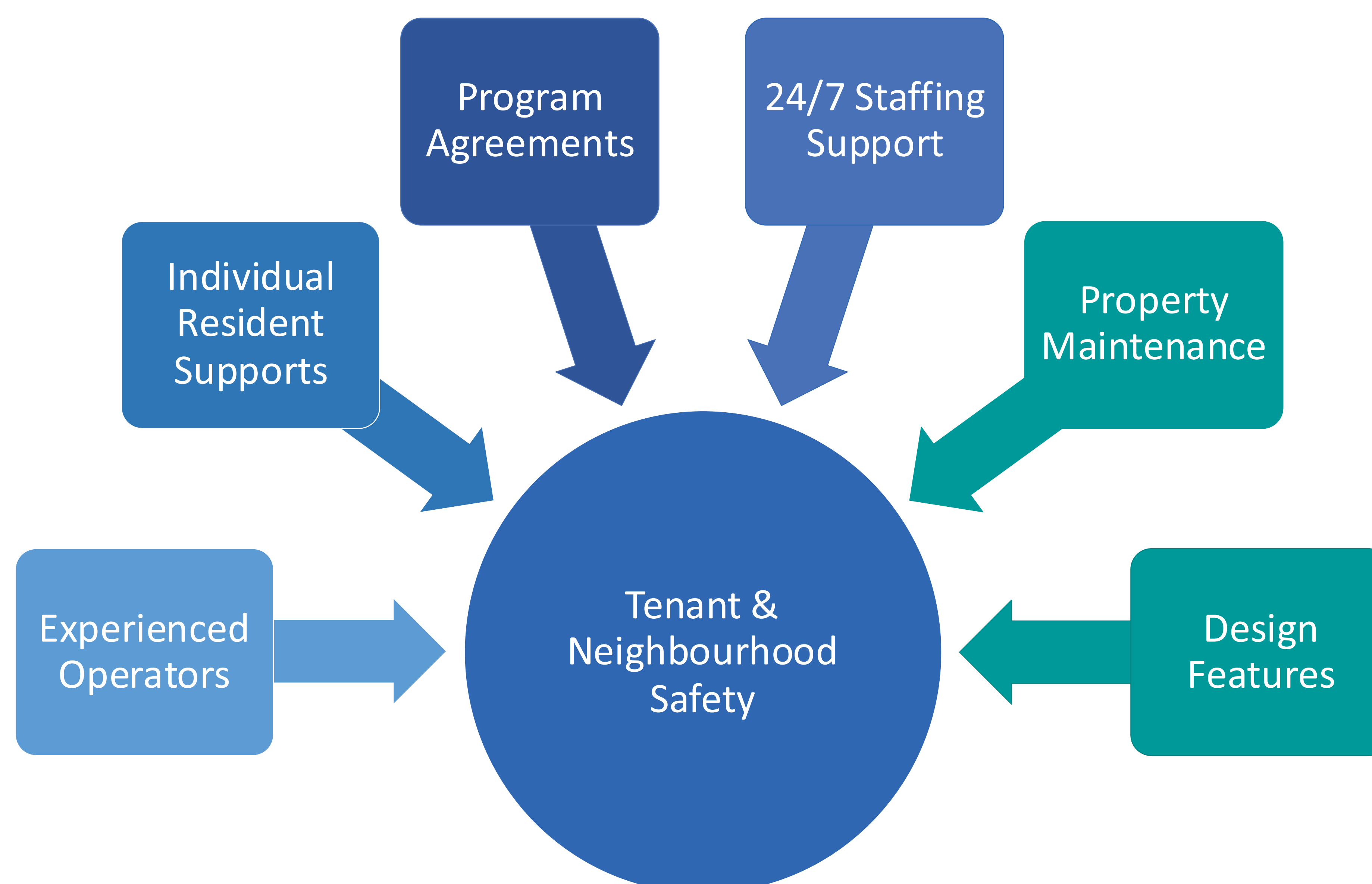
- Apply via Supportive Housing Registry (BC Housing)
- Assessed with input from local service providers (Coordinated Access and Assessment Table)
- Ensures a balanced resident mix



3027 & 3037 2nd Avenue rendering

Safety and Security

BC Housing is committed to working with the supportive housing operator and the City of Port Alberni to build community and promote neighbourhood safety.



Supportive Housing in a community has been shown to:

- Reduce health care and corrections costs by 33%*
- Reduce hospital stays by 50%**
- Reduce ambulance usage by 64%**

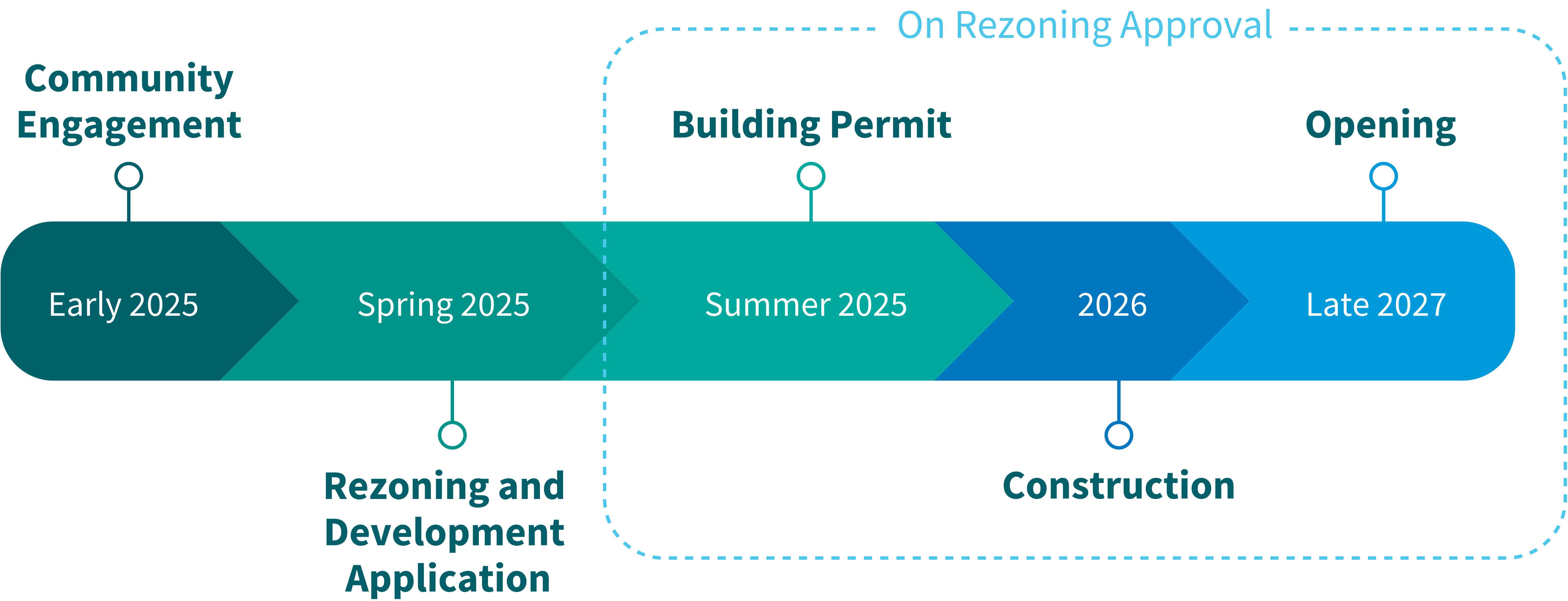
*Source: Patterson, Michelle, et al., 2008. Housing and Support for Adults with Severe Addictions and/or Mental Illness in British Columbia. Centre for Applied Research in Mental Health and Addiction, Simon Fraser University.

**Source: Malatest & Associates Ltd., 2019. Measuring Supportive Housing Outcomes Evaluation.



BC HOUSING

Estimated Timeline



Project webpage

<https://letstalkhousingbc.ca/port-alberni-second-avenue>



Contacts

Stay in Touch

We commit to keeping lines of communication open, answering questions and addressing any concerns.

BC Housing Community Relations Inbox

We welcome comments and questions by email to:
communityrelations@bchousing.org



www.letstalkhousingbc.ca/port-alberni-second-avenue
communityrelations@bchousing.org

