

# 225 Russell Street Supportive Housing

**Community Information Session**

July 8, 2021



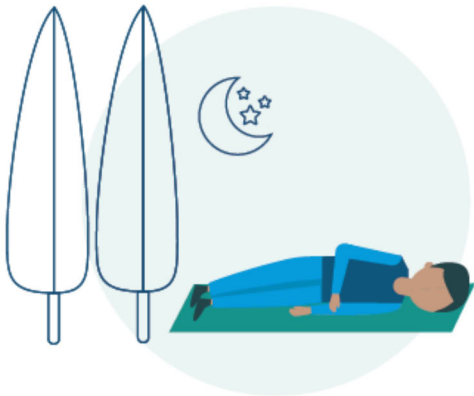
## Purpose for Today

- Share information on proposed permanent supportive housing at 225 Russell Street
- Provide information about the operating model and purpose-built supportive housing.
- Provide information about the proposed architectural and landscape plans.
- Gather feedback and respond questions from the community.

# Supportive Housing

Heidi Hartman, Regional Director, Vancouver Island Region,  
*BC Housing*

# Homelessness in the Capital Region



at least **1,523** individuals experience homelessness in the last Capital region Point-in-Time Homeless Count in March 2020



approximately **300** people at risk of homelessness living in hotel rooms in Victoria



approximately **220\*** people living in encampments in Victoria  
\*229 people moved out of encampments since December

# How will Supportive Housing differ from the current Shelter?

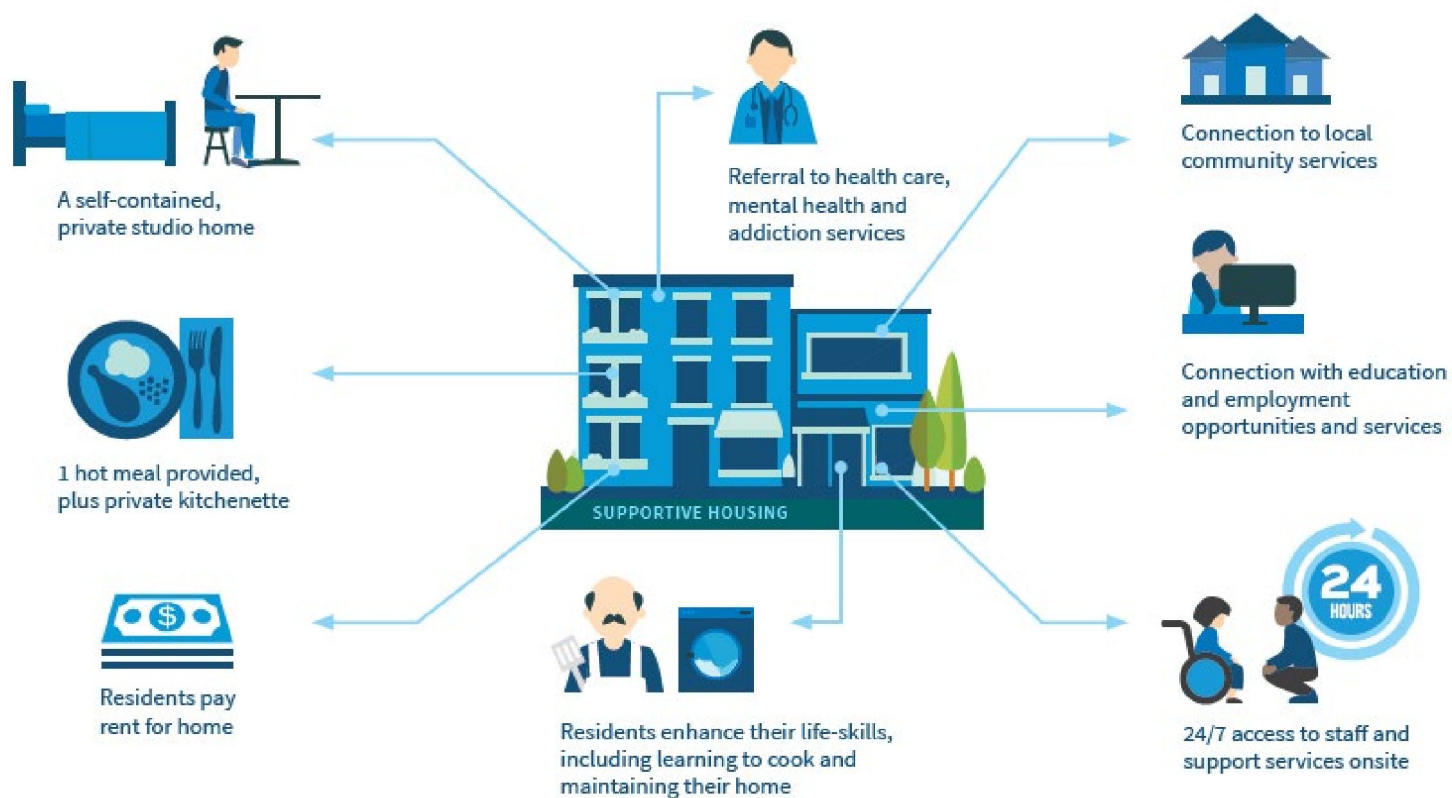
## Emergency Shelter

- Crisis response
- Temporary accommodation
- Basic services are provided
- Majority of people came directly from living in tents

## Purpose-Built Supportive Housing

- Time to ensure thoughtful assessment process for each individual
- Many residents staying at the emergency shelters have already been successfully housed since spring of 2020
- Designed with the neighbourhood aesthetic in mind
- Incorporate supportive housing best practices (single point of entry, common amenity space, security features)
- Each resident has their own self-contained studio home (washroom and kitchen)

# What supports are typically available?



# The Design

Justin Gammon, Architect, *Christine Lintott Architects Inc.*

Deane Strongitharm, Development Consultant, *City Spaces*

Chris Windjack, Landscape Architect, *LADR*



# 225 Russell Street

## **Project:**

Conversion of the existing building into a 40-self contained residential suites for people experiencing homelessness or at risk of homelessness with 24/7 support services.

## **Housing Type:**

Safe and secure self-contained studios for people experiencing homelessness or at-risk of homelessness. The Housing will be operated by Our Place Society.

## **Application to the City of Victoria:**

An application to rezone the property will be made to rezone the property.

## Timeline



# Context



## Street View (Existing)



## Street View (Proposed)



# Main Floor Plan



# Second Floor Plan



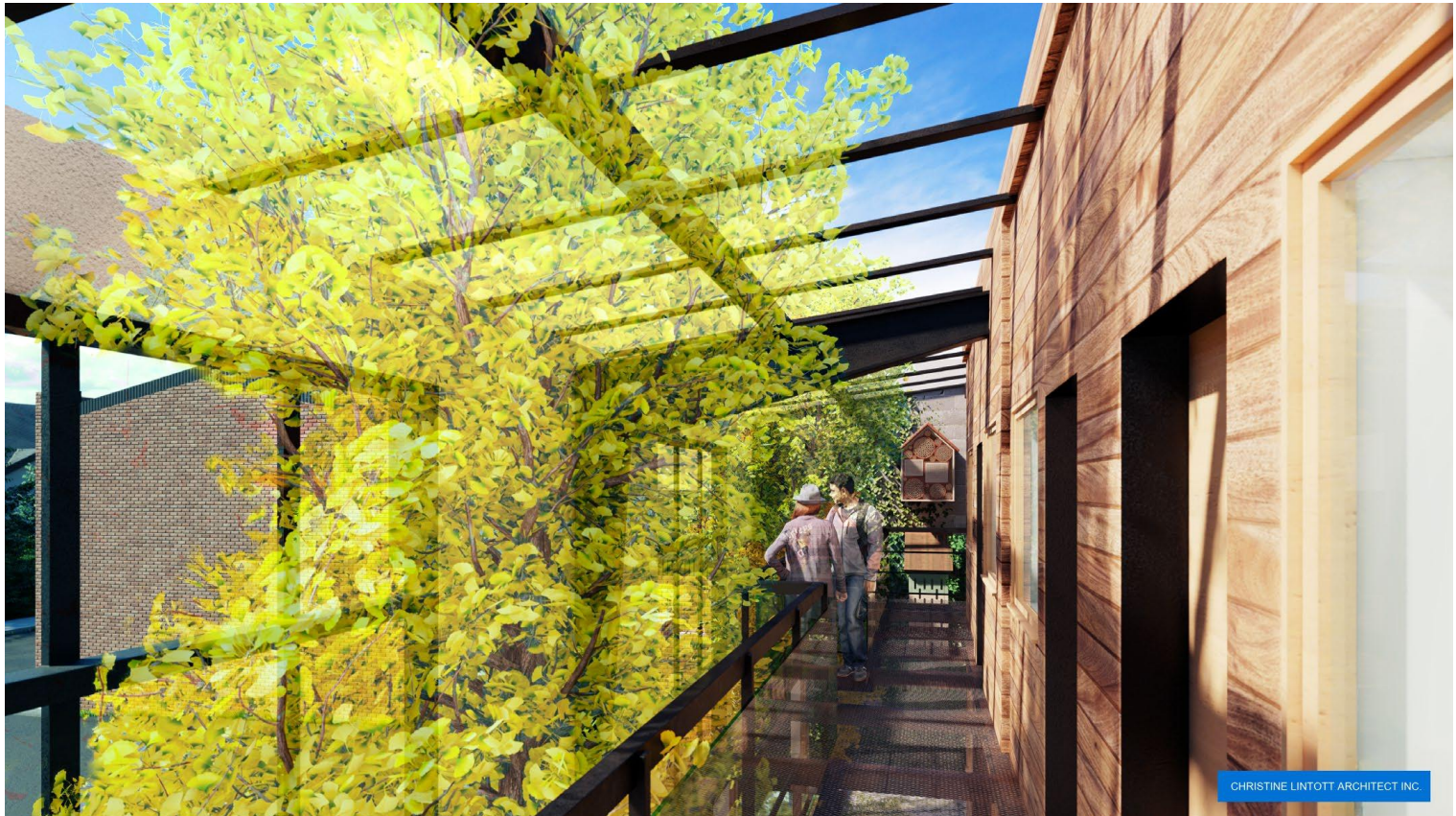
## Typical Units



## Perspective – First Floor



## Perspective – Second Floor





# Opportunities to provide feedback

- Public Consultations during the Official Community Plan Amendment and Rezoning Process
- Visit Let's Talk Housing BC website: <https://letstalkhousingbc.ca/victoria-225-russell>
- Submit inquiries through [communityrelations@bchousing.org](mailto:communityrelations@bchousing.org)

**Thank you**