

Welcome

Community Open House

3177 McGill Crescent, Prince George



Project Partners

Multiple agencies working together can provide the many different health and housing services that local residents need.



is leading the development of this site and will hold the contract with the operator of the building



will provide health leadership and on-site clinical services, including nursing



will provide funding for community support staff to assist with disability-related needs, including employment, outreach, and community inclusion

What is Complex Care Housing?



Complex Care Housing provides deeply affordable homes with supports for residents with complex needs.



Services for residents accessing this type of housing include a robust suite of health, cultural, and social supports.



Many services are available to residents under one roof and in their own home, for as long as they need.



The services provided may vary between projects and are based on the unique needs identified in the community.

Project Overview: 3177 McGill Crescent



The site is already zoned for multi-residential uses. **Rezoning is not required.** Additional municipal permits will be obtained through the development process.



10 self-contained studio apartments



All residents will have a care plan and pay rent



Health and other services provided on site

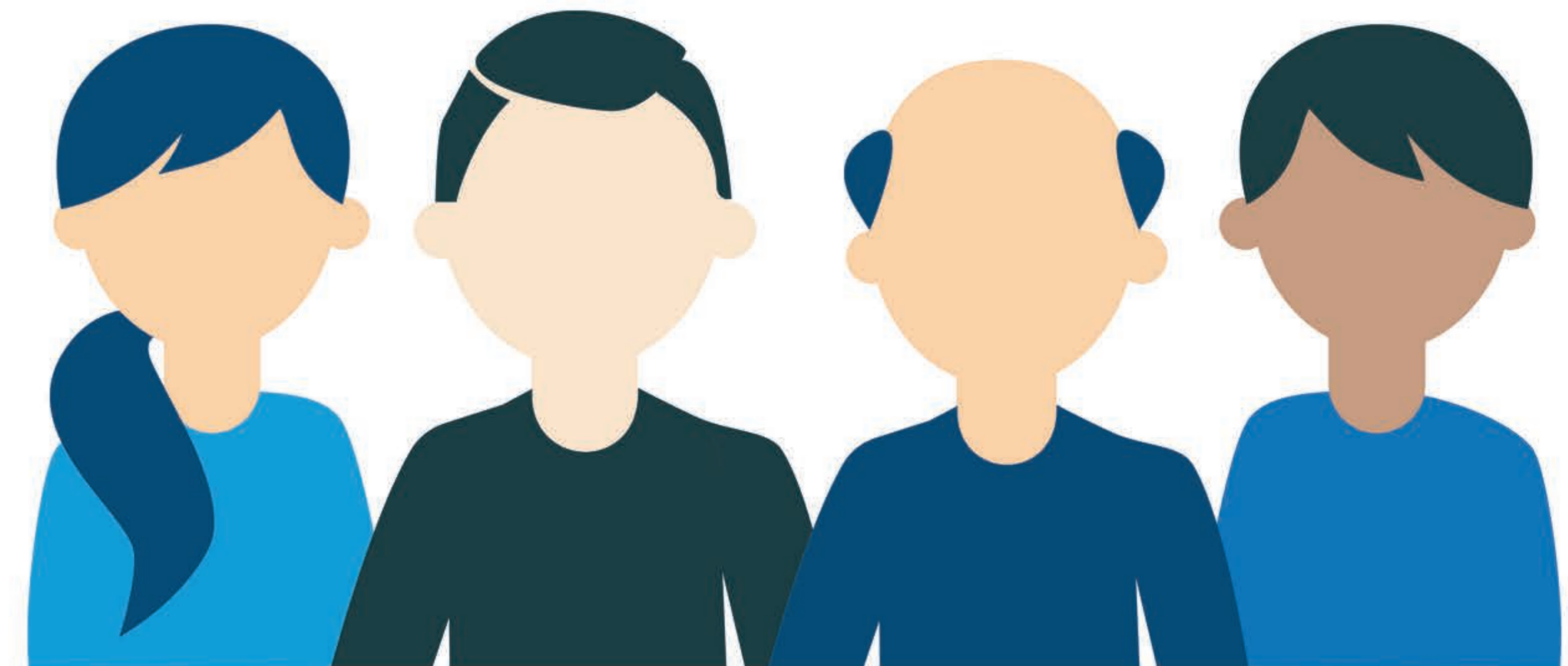


Professional, 24/7 staffing provided on site

Who Will Live at McGill Crescent?

Residents:

- Undergo an assessment process to ensure they meet the criteria for this type of housing
- Require support to obtain and retain suitable, stable housing
- Pay rent and are supported to adhere to behavioural expectations
- Would benefit from wrap-around mental health and community supports



Housing with health supports for:

- Adults (19 +), including seniors
- All genders
- People with cognitive/physical challenges

Neighbours Like Janie



Janie is a 25-year-old woman who has a developmental disability and severe anxiety. She is often **unable to leave her home to get the supports she needs** and will not allow people into her apartment. She has been evicted several times because she does not understand time and knocks on doors asking for help during the night.

When her anxiety is high, she will go to the hospital as she believes she is sick and needs medical treatment. Janie has a history of injuring herself and making false reports of assault so she can be admitted to hospital.

Janie **does well when her anxiety is under control and she can learn new skills slowly in a supportive environment.** More regular, specialized supports close to home would **dramatically improve her quality of life.**

Inspired by a real story, anonymized and edited for privacy.

Why This Location?



Walkability to nearby amenities



Close proximity to transit



Access to green space

These elements promote the goal of community inclusion and provide residents opportunities to develop independence.



BC Housing and Northern Health toured Prince George and consulted with the City to find a suitable site that was available and appropriately zoned. Selection of this site allows for expedited delivery of much-needed housing.



Nestling housing among treed areas on this large site supports space for stability and well-being.

DRAFT Site Plan



- 1. OUTDOOR AMENITY AREA
- 2. ENTRY AREA
- 3. PATIOS WITH PLANTING BUFFER
- 4. PRIMARY CIRCULATION
- 5. SECONDARY CIRCULATION

Preliminary tree removal, including cutting trees to stumps, will occur in late March and early April, before bird nesting.

DRAFT Floor Plan



Timeline

August 2024

Letter to neighbours

Email invitations to local interest holders to meet with project partners

January 2025

Invitations to local interest holders and neighbours to small group conversations and open house

March 2025

Engagement summary will be shared and posted on Let's Talk webpage

TBD

Who To Call | When To Call info sheet will be shared with neighbours when building opens

August 2024

Let's Talk project webpage published

February 2025

Small group conversations and open house

TBD

Additional engagement opportunity when housing operator is chosen

Ongoing support for questions and comments



communityrelations@bchousing.org

Stay up to date

