



SUPPORTIVE HOUSING IN VANCOUVER

Renfrew Street at East 14th Avenue

2930 Renfrew Street

APRIL 2023

Canada





Overview

- Understanding homelessness
- The need for supportive housing in Vancouver
- How this housing will help people in need
- The proposal for homes with supports on Renfrew Street at East 14th Avenue
- Creating welcoming and inclusive communities
- Process and next steps



Understanding homelessness

Canada



**It takes a
community to
address
homelessness**



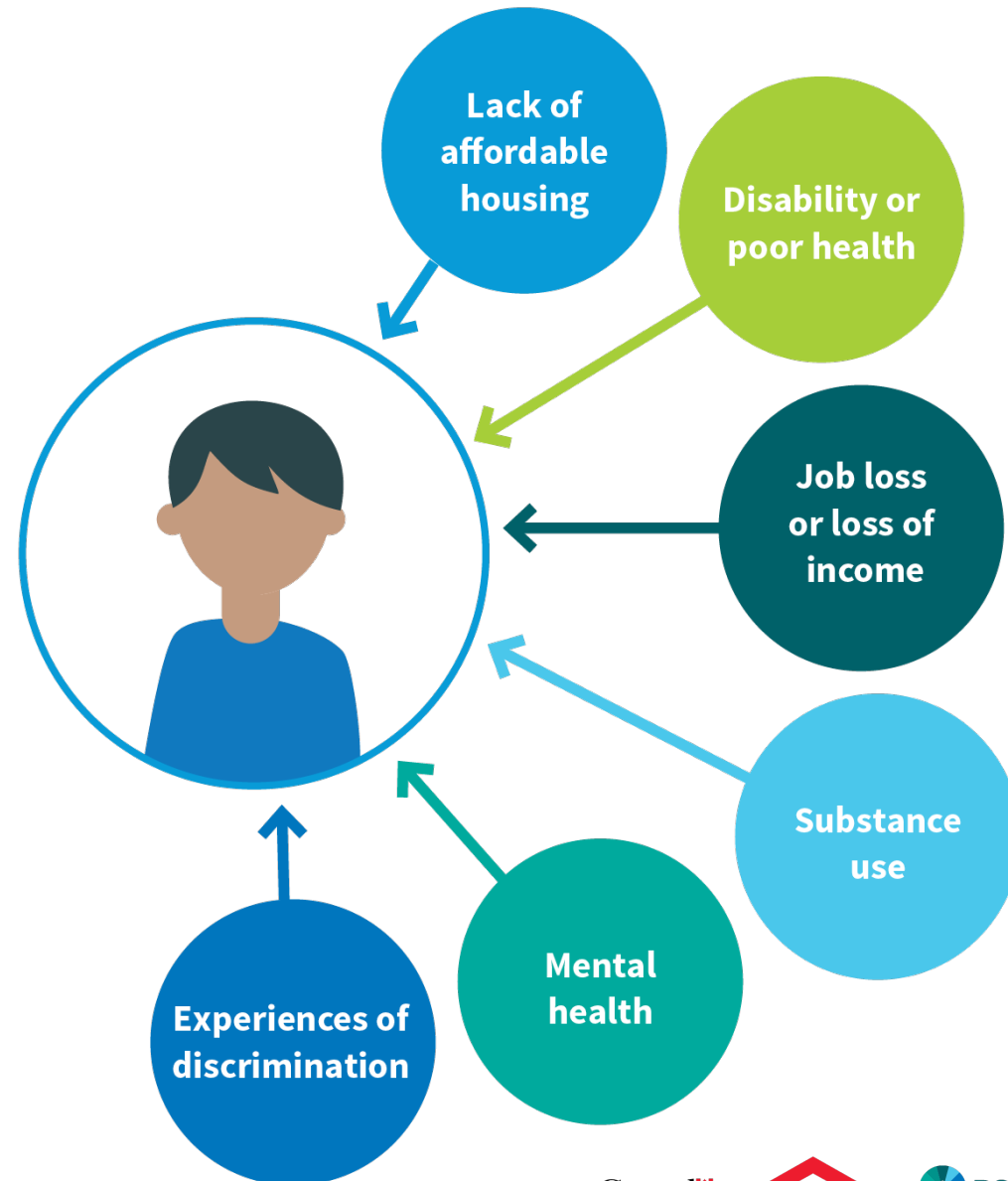


Helping people in need

People who are at risk of or are experiencing homelessness are not all the same.

They can be young people, seniors, people with disabilities and anyone who has experienced trauma, poverty, or struggled with the high cost of housing.

Each person requires a unique combination of services and programs to support their health and wellbeing.





Homes with supports help create safe, inclusive communities for everyone

When there are supportive homes in a community it means there are fewer people outside struggling to survive. When a person chooses to live in supportive housing, they:

- have a warm, safe place to call home
- can access the necessities of life such as food, washrooms and laundry
- can begin to heal from the damage caused by living outside
- strengthen community connections



Orca Place

Watch how a community welcomed a new supportive housing building in Parksville, BC.

Orca Place

Parksville Supportive Housing





The need for supportive housing in Vancouver

Canada





Vancouver needs supportive housing

Vancouver is in a housing crisis and more than 2,000 people across the city are experiencing homelessness.

Creating warm, safe homes with supports for people experiencing or at risk of homelessness in our communities continues to be a top priority for BC Housing and the City of Vancouver.



Cliff's story of homelessness

Cliff suffered an injury and was unable to work. Without an income, Cliff lost his home and ended up living on the streets for seven months.

“It’s hard to go to work when you’re homeless. You don’t know where you’re going to be the next day. It’s no fun having no home and having to carry everything you own on your back.”

This situation that took someone to homelessness could happen to anyone.

Since moving into supportive housing, Cliff can make it through the whole month with the amount of money he has. He has access to support staff, meals and has received help with his resume. Cliff has started looking for work and spends a few days a week volunteering at the shelter he was staying at when he was experiencing homelessness to give back to the community.





“The need for housing with supports for people experiencing or at risk of homelessness in Vancouver has never been greater. For someone who has been living outside, or in unstable housing, having a warm, safe space to call home is life-saving. Supportive housing offers the added benefit of being able to connect people directly to the help they need.”

– *City of Vancouver Homelessness Services Outreach Team Member*



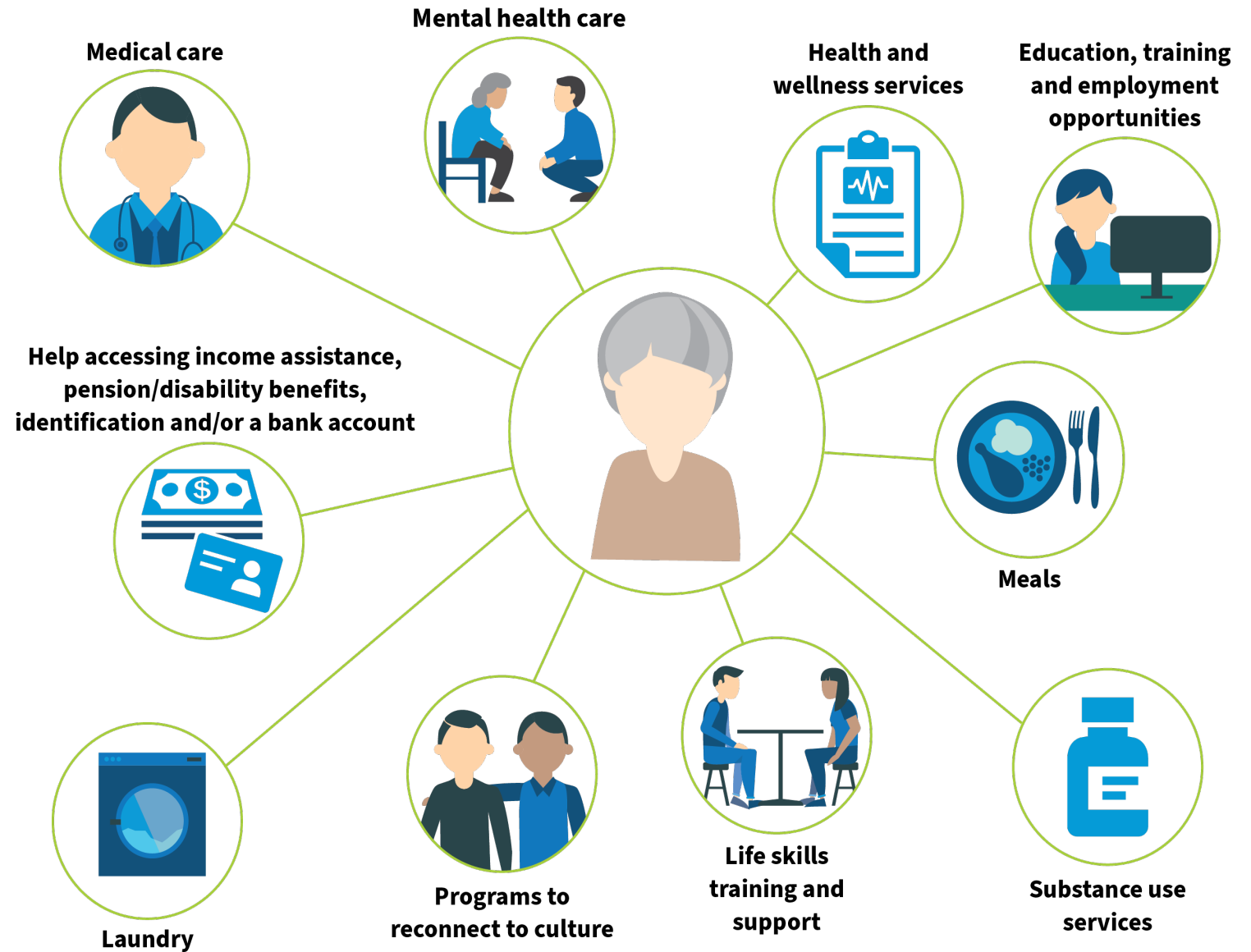
How this housing will help people in need

Canada



Supportive housing:

A vital connection to programs and services





How supportive housing programs are managed

Supportive housing programs are funded by the Province and managed by non-profit housing operators. They bring professional building management experience and expertise supporting the unique needs of each resident.

All residents in supportive housing have made a choice to live there, pay rent, and are able to access the supports provided by non-profit housing operators, health care professionals and other community-based programs.



Lu'ma Native Housing Society

If approved, this building would be managed by Lu'ma Native Housing Society, an established non-profit housing provider that owns and manages more than 550 affordable homes in Vancouver.



Tamara's story

Watch the story of how supportive housing changed Tamara's life.





The proposal for homes with supports on Renfrew Street at East 14th Avenue

Canada



Renfrew Street at East 14th Avenue project location



New warm, safe homes with supports on Renfrew Street at East 14th Avenue

BC Housing, Lu'ma Native Housing Society and the City of Vancouver are proposing to build a new 12-storey building with 76 supportive homes at 2930 Renfrew Street. This proposal replaces an earlier version to build a six-storey building with 50 supportive homes that was shared with the community in June 2021.

These homes would address the urgent need for supportive housing and prevent people from experiencing homelessness.

- All units would be studio apartments with a private bathroom and kitchen.
- At least 5% of the homes would be fully accessible.
- The building would include space for Indigenous cultural practices as well as amenities like shared laundry, commercial kitchen, dining area and program space.



Providing more homes for people in need

When developing supportive housing on City-owned land, BC Housing and the City of Vancouver seek to maximize opportunities to build supportive housing to address the critical need for housing in Vancouver.

For this reason, the original proposal for 2930 Renfrew has been updated from a six-storey building with 50 homes to a 12-storey building with 76 homes. The change aligns with the direction in the Vancouver Plan to consider mid-rise buildings, especially for social and supportive housing, close to rapid transit stations.



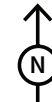


Proposed 12-storey building at 2930 Renfrew St.



Perspective towards southeast

Designs subject to change










Landscape Design Principles

WELCOMING ENTRIES

Access points for the site welcome residents and visitors through forms, materials, and functional elements. Each point of entry to the site is detailed to express the movement from outside world to sacred space.



NATURAL MATERIALS

A simple palette of materials in natural tones. Wood and stone mix with native plant materials to soften urban edges. Native plants with meaning and significance are integrated into the planting plan.



CULTURALLY SIGNIFICANT

Forms and elements that are meaningful to residents and site users are integrated into spaces. Room for art, cultural symbols, meaningful materials, all work together to give additional layers of meaning to the spaces.

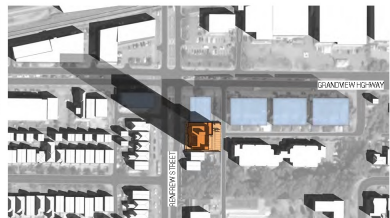


SHADOW STUDY

AT UTC = -7:00 hrs Daylight Saving Time (March, June and September)
 Coordinates for shadow study: 49.25758, -123.04391
 Building Height considered: 46.54 m (47.49m T.O Elevator Overrun)



MARCH EQUINOX



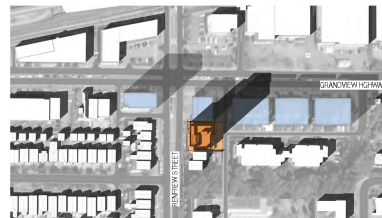
March 21st | 10:00am



March 21st | 12:00pm

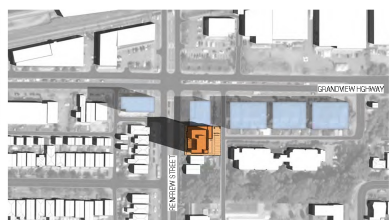


March 21st | 2:00pm



March 21st | 4:00pm

SUMMER SOLISTICE



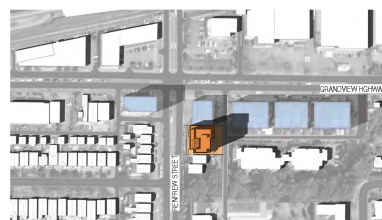
June 21st | 10:00am



June 21st | 12:00pm



June 21st | 2:00pm

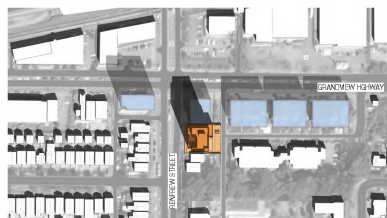


June 21st | 4:00pm

SEPTEMBER EQUINOX



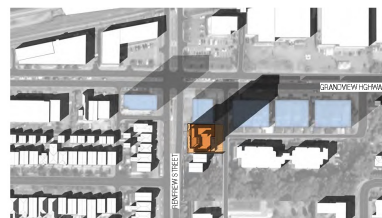
September 21st | 10:00am



September 21st | 12:00pm



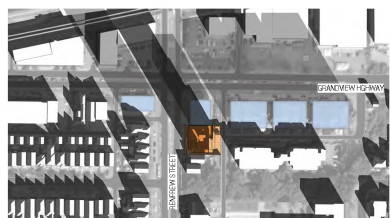
September 21st | 2:00pm



September 21st | 4:00pm

AT UTC = -8:00 hrs (December)

WINTER SOLISTICE



December 21st | 10:00am



December 21st | 12:00pm



December 21st | 2:00pm



December 21st | 4:00pm

Shadow Analysis



Example of the interior of a supportive housing studio home in Vancouver





Creating welcoming and inclusive communities

Canada





Supporting the success of the proposed building

“We’ve been part of opening multiple buildings of supportive housing in Vancouver and are always impressed by the way the community comes together to welcome their new neighbours. We’ve seen many different ideas: welcome baskets, food deliveries and free passes to the local community centre for the new residents. Every action, big or small, goes a long way in making the new residents feel at home.”

– Julie Roberts, Community Builders Group





Nora Hendrix Place hosted a community gathering with music, food and dancing to celebrate the opening of the new supportive homes.



Baaad Anna's—a knitting shop in Vancouver—knit nearly 400 handmade items for people moving into supportive housing to help them feel welcome in their new homes.



**Sole Food Farms
partnered with
Hummingbird Place to
provide employment
opportunities for
supportive housing
residents.**



Process and next steps

Canada





Opportunities for community input

BC Housing and the City are committed to moving forward with a housing proposal and a rezoning application to develop this specific site. We invite community feedback on aspects of the proposal, including:

- Site design and building design, and elements such as lighting and landscaping
- Interest in participating in the Community Advisory Committee (CAC)
 - Should these new homes be approved, a CAC would be established with members from the community and project partners to maintain and facilitate information sharing once the project is complete

As with any other development in Vancouver, information about a building's future residents such as their race, gender, level of income, private healthcare needs, or sexual orientation does not factor into City Council's decision to approve a site.



Opportunities for community input

There are multiple ways to provide input into the proposal to build supportive housing at Renfrew Street at East 14th Avenue:

- Submit a comment during **the Public Comment Period** from April 4 to April 28 at letstalkhousingbc.ca/Vancouver-Renfrew
- **Submit a comment any time** through the comment form at letstalkhousingbc.ca/Vancouver-renfrew
- Attend a virtual **Community Conversation** on April 18 or April 20
- Ask a question or share a comment with the **Community Liaison** by phone or email at communityliaison@bchousing.org or 604-829-9321

Feedback collected during this early engagement period will be considered in the development of a rezoning application. Once BC Housing develops and submits a rezoning application, the City of Vancouver will lead another round of community engagement.

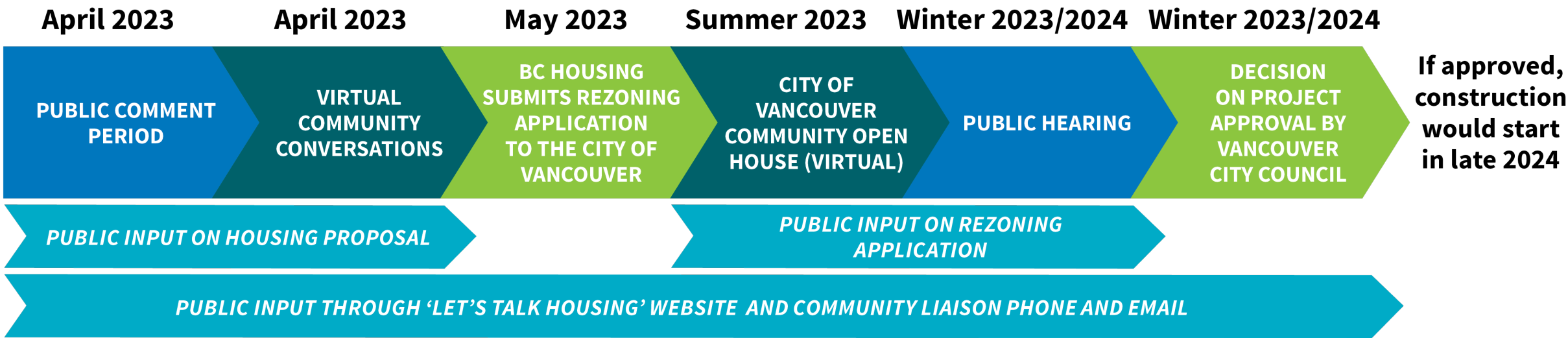


Virtual Community Conversations

- April 18 from 6pm to 7pm
- April 20 from 6pm to 7pm

Visit letstalkhousingbc.ca/Vancouver-Renfrew for the link to the meeting. The link will be available at the date and time of the meeting.

Moving forward at Renfrew Street at East 14th Avenue



Dates in the timeline are approximate and subject to change.



SUPPORTIVE HOUSING IN VANCOUVER

Canada



Questions or comments

Visit **Let's Talk Housing BC** website:
letstalkhousingbc.ca/vancouver-Renfrew

Submit inquiries through:

- Email at communityliaison@bchousing.org
- By calling the Community Liaison at 604-829-9321
Monday to Friday 9 am to 4 pm

